

WASHINGTON'S WATER RIGHT ACQUISITION PROGRAM

Bob Barwin
Dept. of Ecology
October 6, 2010



Our Strategy

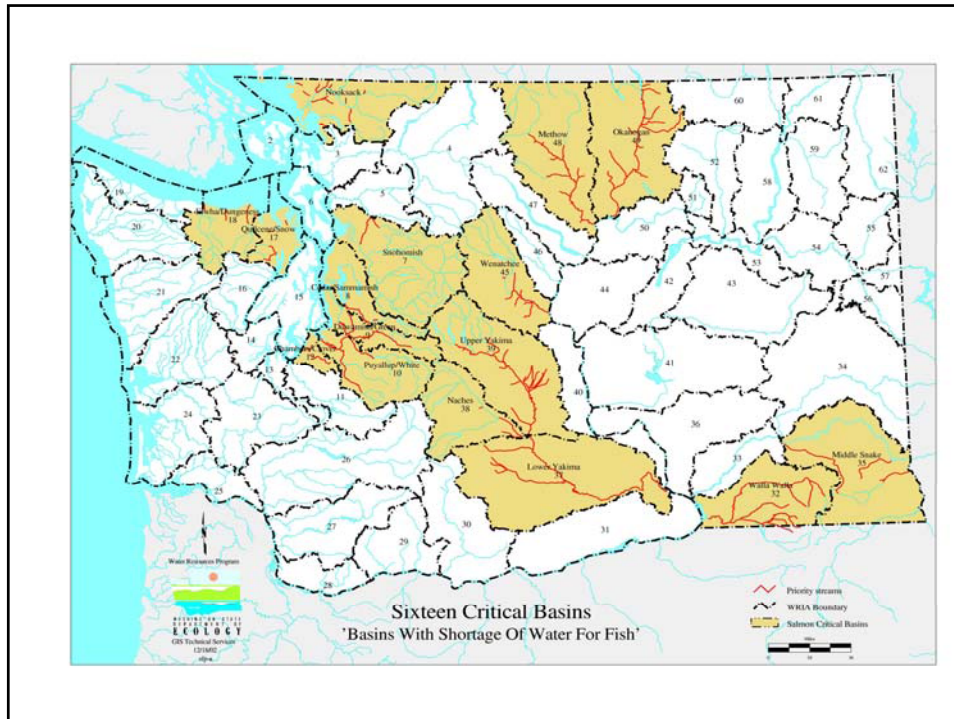
- ❑ Selecting Right Tools for Acquiring Water Rights
- ❑ Prioritizing Where and When to Acquire Water Rights
- ❑ Evaluating Water Rights for Transfer to Trust Water
- ❑ Establishing Partnerships and "Local Market Places"
- ❑ Determining and Negotiating Fair Market Value
- ❑ Ensuring Cost-Effective and Efficient Use of Public Investments
- ❑ Protecting Trust Water and Evaluating Success

Our Partners

- ▣ Washington Water Trust
- ▣ Washington Water Project – Trout Unlimited
- ▣ US Bureau of Reclamation
- ▣ Washington Conservation Commission
 - Conservation Districts (primarily Kittitas, Walla Walla, Okanogan)
- ▣ Washington Dept. of Fish and Wildlife
- ▣ BPA/National Fish & Wildlife Foundation
- ▣ Columbia River Tribes

Where We Concentrate Efforts

- | Eastern Washington | Western Washington |
|--------------------|--------------------|
| ▣ Lower Yakima | ▣▣ Cedar-Sammamish |
| ▣ Methow | ▣▣ Chambers-Clover |
| ▣ Middle Snake | ▣▣ Duwamish-Green |
| ▣ Naches | ▣▣ Elwha-Dungeness |
| ▣ Okanogan | ▣▣ Nooksack |
| ▣ Upper Yakima | ▣▣ Puyallup-White |
| ▣ Walla Walla | ▣▣ Quilcene-Snow |
| ▣ Wenatchee | ▣▣ Snohomish |



The Tools

- ❑ Publicly funded conservation projects
- ❑ Donations for a term, revocable
- ❑ Leases
 - Short-term
 - Long-term
 - Partial season
- ❑ Diversion Reduction Agreements
- ❑ Permanent Acquisition (Purchase or Donation)

The funding programs:

- ▣ Irrigation Efficiency Grant Program (IEGP)
- ▣ State Water Right Acquisition Programs
 - Instream flow improvement in 16 fish critical basins
 - Yakima “Cabin Owners” Mitigation Program
 - Walla Walla Shallow Aquifer Mitigation Program
 - Columbia River Water Management Program
- ▣ Yakima River Basin Water Enhancement Program
- ▣ NFWF/BPA Columbia Basin Water Transactions Program
- ▣ Emergency Drought Response and Drought Preparedness

Irrigation Efficiency Grant Program

- ▣ Up to \$8 million available for conveyance and on-farm efficiency projects
- ▣ Net water savings are conveyed to the TWRP in proportion to the public funds
- ▣ Projects are identified, designed, and managed by the Conservation Commission and several conservation districts
- ▣ The acquired water rights are placed into trust for at least the useful life of the infrastructure
- ▣ Project criteria:
 - Projects must be within one of the 16 fish critical basins
 - Up to 85% cost share
 - Caps of \$500,000/cfs, \$3000/acre
 - Must contribute at least 5% to summer-fall low stream flow

State Water Right Acquisitions - General

- ▣ Periodic funding of capital accounts
 - State Building Construction Account
 - Drought Preparedness Account
- ▣ \$1-2 million per biennium
- ▣ Priorities are within 16 fish-critical basins
- ▣ Water acquisition, no set percentages
- ▣ Highly effective when used in partnership with programs allowing land purchases
 - Wapatox Hydroelectric Project
 - Fowler Ditch Assn

Yakima "Cabin Owners" Mitigation Program

- ▣ For obtaining and distributing mitigation for junior users when they would otherwise be curtailed
- ▣ Funded from the State Building Construction Account
- ▣ \$450,000 for staff and water right acquisition
- ▣ One-time capital funding
- ▣ Costs of acquiring a water right can be recovered when mitigation benefit is assigned to specific water users

Walla Walla Shallow Aquifer Mitigation

- ▣ Partnership with Washington Water Trust
- ▣ Water bank for mitigation of new residential ground water uses relying on the shallow aquifer water around Walla Walla
- ▣ Mitigation parameters defined in new rule
- ▣ Funded from the State Building Construction Account

Columbia River Basin Water Management Account

- ▣ Project types:
 - Crop Water Duty Reductions (deficit irrigation)
 - Crop Changes
 - Fallowed Corners
 - Partial Season Purchases or Leases
 - Purchase or Lease of the Water Rights
- ▣ Acquisition and transfer from one WRIA to another requires *specific* legislative authorization

Yakima River Basin Water Enhancement Program

- ▣ Permanent land and water acquisition
 - State typically funds the water portion
 - Wapatox Hydroelectric Project
 - Fowler Ditch Assn
- ▣ Water rights can be acquired as a result of conservation projects
 - e.g. Sunnyside Division Re-regulation Reservoirs
 - 1/6 state and local funds (Ref 38), 5/6 fed funds
 - 2/3 of net water savings to TWRP

National Fish and Wildlife Foundation / Bonneville Power Administration

- ▣ Ecology, Washington Water Trust, and Washington Water Project (WWP-TU) are Qualified Local Entities
- ▣ WWT and WWP-TU identify specific acquisitions candidates, negotiate agreements, and make the deal.
- ▣ Ecology processes applications, maintains flow monitoring network, and watermaster if needed
- ▣ WDFW identifies environmental benefits and monitors
- ▣ Bottom up project identification w/in BPA priorities

Water Banking

- ▣ Yakima River Basin
 - Upper Kittitas valley
 - Lower Kittitas valley
 - Post-1905 “Cabin Owner’s” Mitigation
- ▣ Walla Walla shallow aquifer
- ▣ Dungeness /East WRIA 18

Taneum Creek – Yakima Basin

- Supports ESA listed steelhead and bull trout
- Restored 28.8 cfs (winter) and 1.89 cfs (summer) *permanently* to Taneum Creek through source substitution
 - Restored access to 21 miles of fish habitat
 - Water users sourced to groundwater and irrigation district
 - Changed 130-yr practices
- Voluntary agreements with Taneum Canal Company and Bruton Ditch



TANEUM CANAL COMPANY

Source substitution: winter water for fish & livestock

- Up to 28.8 cfs – from November to February
- Allows for full passage of salmonids and steelhead
- Canal company shareholders continue receiving stockwater from individual wells
- Restored a water-deprived and often dry section of Taneum Creek
- Created opportunities for further work with TCC
 - Diversion dam reconstruction – Fall 2010
 - Summer instream flow opportunities



BRUTON DITCH

Passage barrier removal: adding instream flow and providing passage

- Major passage barrier removed Fall 2009
 - ~ 12 feet high concrete dam
- 1.89 cfs – April—October instream flow
- Irrigators source switched to a separate source: continue irrigation
- ~ 60 endangered steelhead migrated beyond the dam site in spring 2010
- 2010 marks first spring Chinook smolts using habitat above former dam

Before

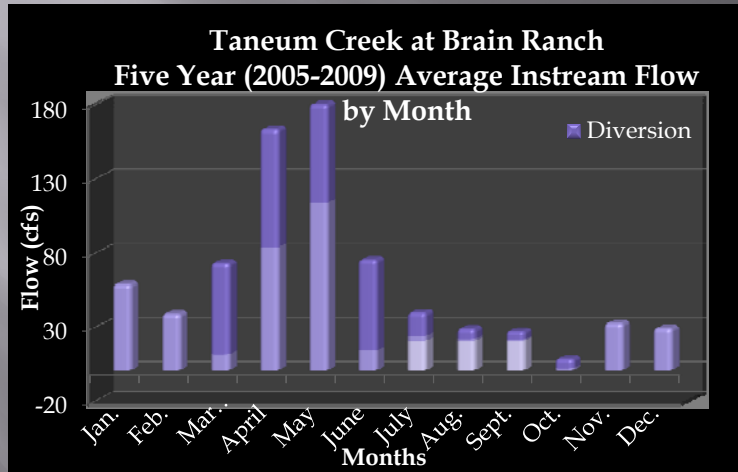


After



Taneum Creek – Yakima Basin

Instream Flow from WWT and USBOR



Manastash Creek Water Right Reverse Auction



- Manastash Creek
 - Implementation Plan
 - Instream Flow/ESA
 - Fish screening and passage
 - Community values
 - Outreach
 - 180 water Right holders
 - Partners
 - Valuation
 - Instream flow goal
 - 6 cfs
 - Result:
 - 5 accepted bids
 - > 3 cfs

The opportunity

- ❑ Manastash Creek typically peaks in the months of April and May.
- ❑ Typically, by early to mid June there is only enough water in Manastash Creek to meet the first and second class rights.
- ❑ All rights are reduced by 50% on July 1.
- ❑ Manastash Creek is dry in a 3.25 mile stretch between the Reed Ditch diversion and the Westside Canal and Manastash Creek from mid June to November.

April 6, 2005



July 2, 2007



July 10, 2009



July 13, 2010



Additional Information

- ▣ [Ecology's Water Market, Water Acquisition, and water Bank portal page:](http://www.ecy.wa.gov/programs/wr/market/market.html)
<http://www.ecy.wa.gov/programs/wr/market/market.html>

- ▣ [Ecology's Office of Columbia River page:](http://www.ecy.wa.gov/programs/wr/cwp/crwmp.html)
<http://www.ecy.wa.gov/programs/wr/cwp/crwmp.html>