

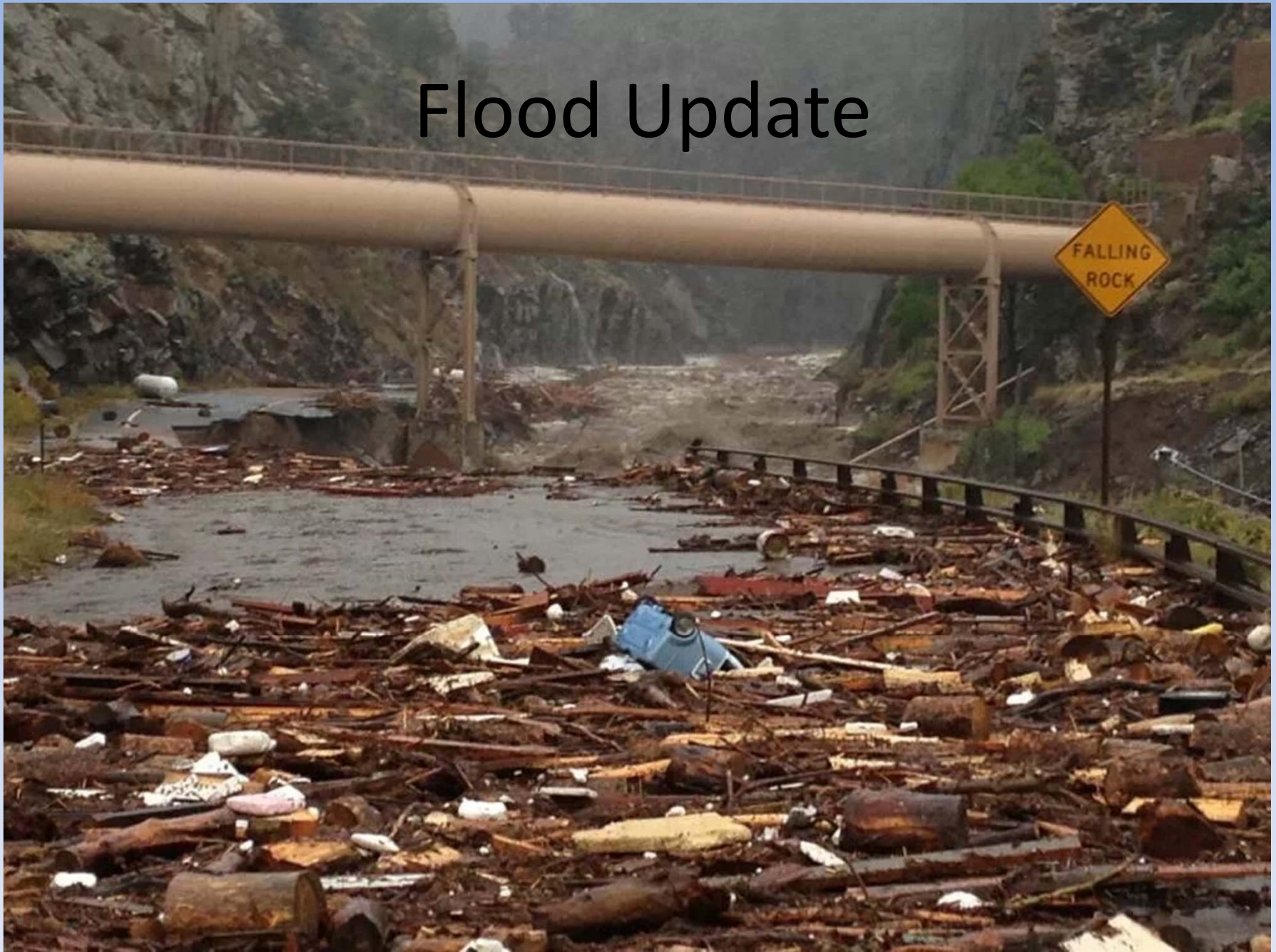
# Major Water Transfers Between Basins

Michael Sullivan

Colorado Division of Water Resources



# Flood Update





# High Velocity Flows

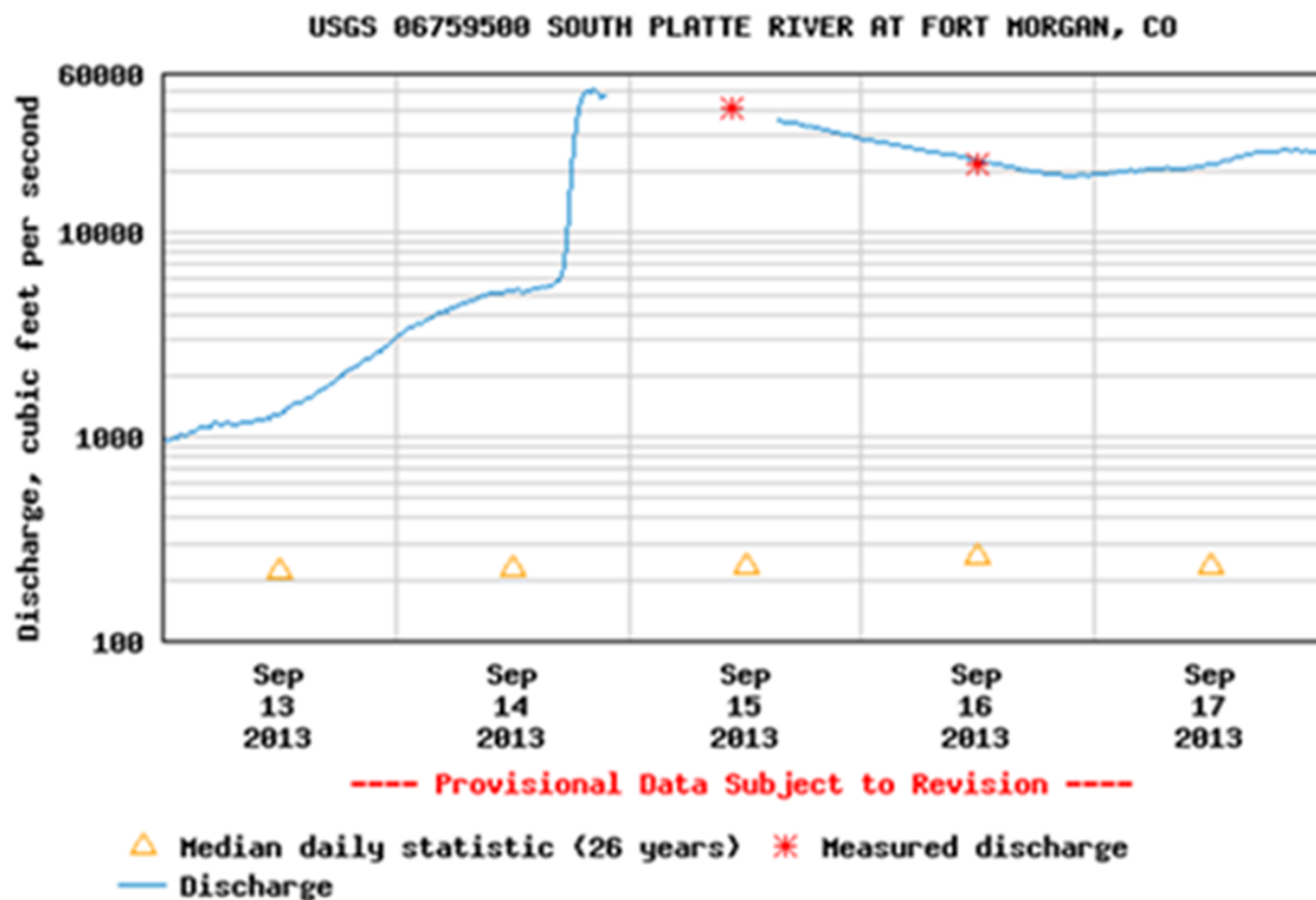




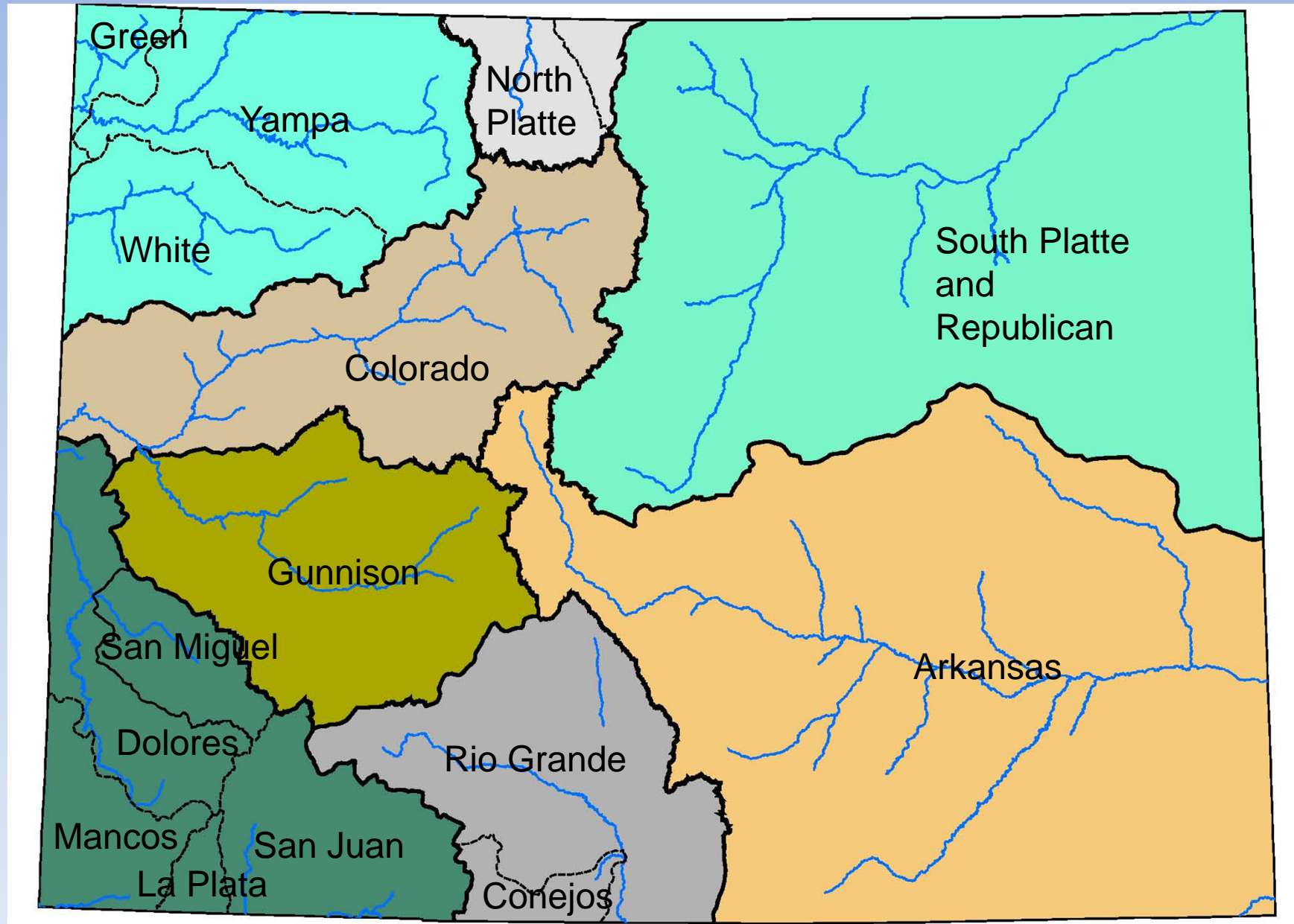
# Moving Big Rocks



## Discharge, cubic feet per second



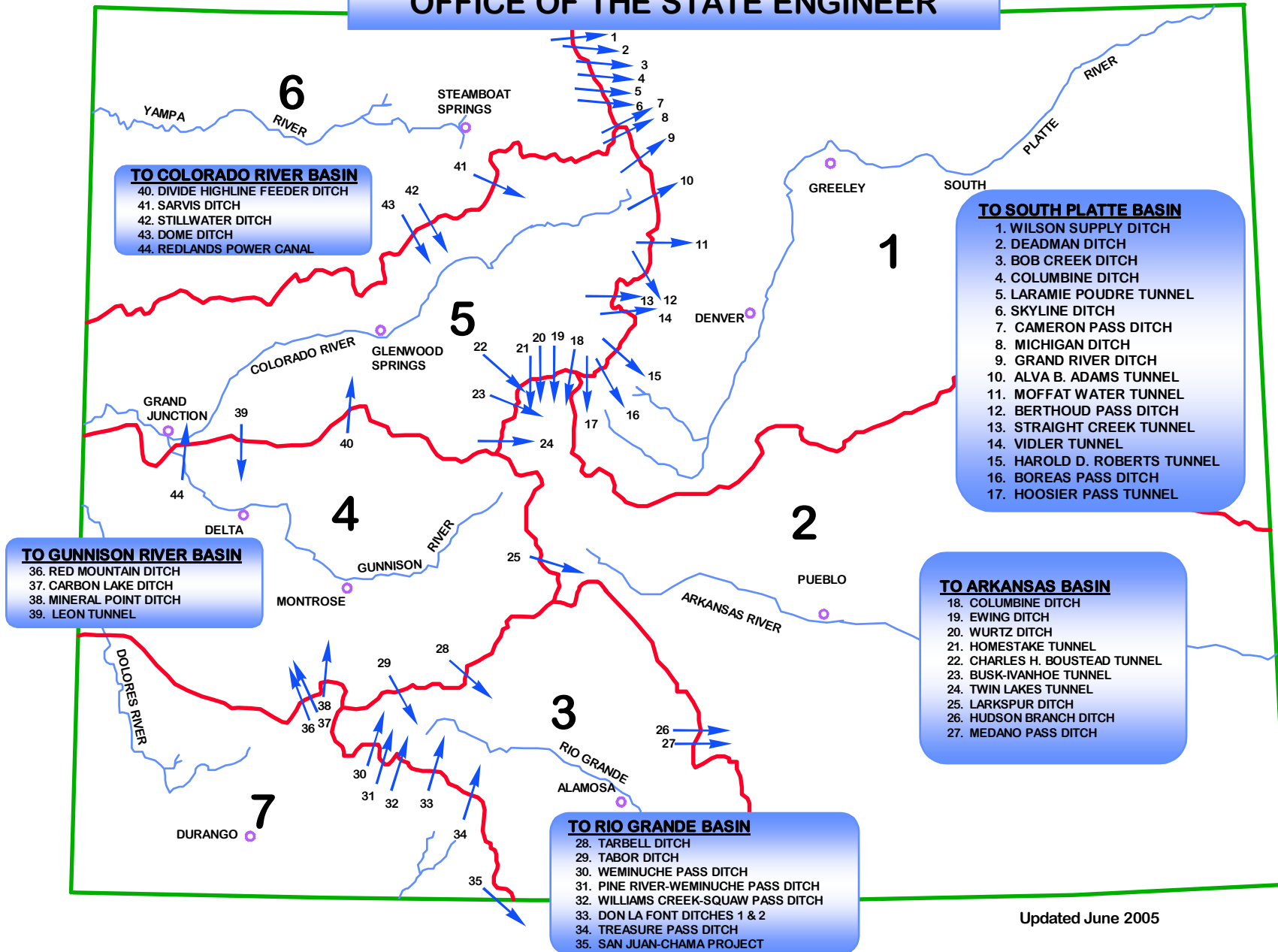
# Colorado's Major Basins and Subbasins





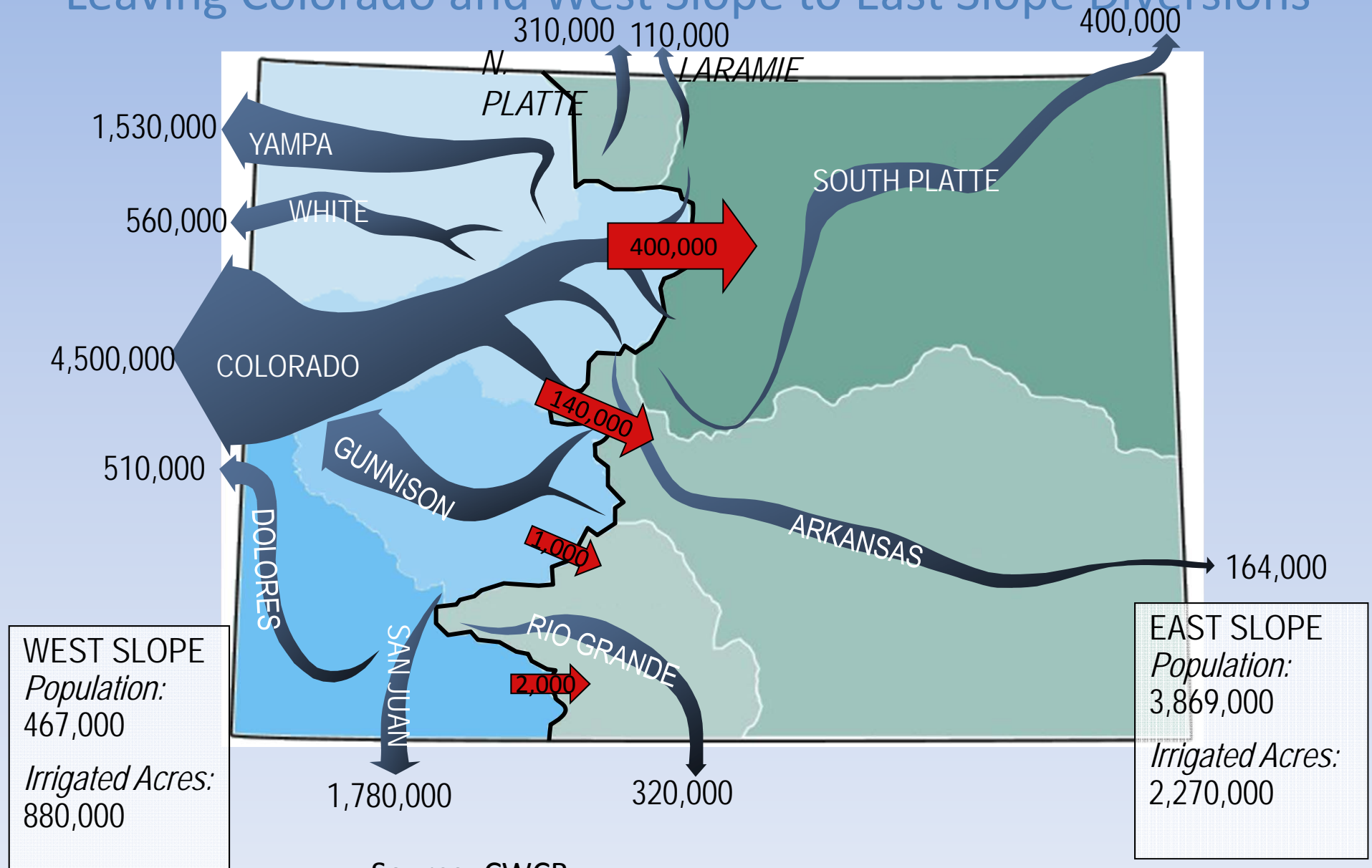
# TRANSMOUNTAIN DIVERSIONS

## OFFICE OF THE STATE ENGINEER



Updated June 2005

# 2000 Average Annual Flows (Acre-Feet) Leaving Colorado and West Slope to East Slope Diversions



Source: CWCB



# Try for a TB/TM Project

- Basin of Origin: fight to protect a way of life
- Basin of Use: fight to meet a pressing demand
- Projects become EIS and permitting fights if there is any federal nexus
- Projects are Water Rights fights
  - The court for appropriation is in the basin of origin
  - The court for a change of use is in basin of use
  - Newer requirement to notify in both basins (court ruling).
- Notice the word Fight here?

# Recent TB/TM Proposals

- Big straw
- Flaming gorge pipeline
- Yampa pipeline
- Union Park Reservoir
- Moffat firming project
- Windy gap firming project



# Silver Lining in TB/TM Waters

- Right to reuse imported water 37-82-106 CRS
- Thornton v. Bijou (right to reuse)
- Dominion and control of the reuse water
  - Never lose the interest in that reuse water even after a long time of non use.
    - Those who became dependent on reuse water?
  - Intensive accounting yields water you thought you'd lost.
  - Exchange, exchange, exchange...

# Silver Lining –some tarnish

- Today a lot of reuse water leased for replacement of agricultural well depletions
- New Reuse projects (municipal) coming...what happens to that agricultural demand?
- There isn't enough TB/TM to fulfill all needs
- Are we hitting the limits on exchange potential
- When does water quality become overwhelming?



# Where Are We Today?

- Fierce posturing about new TB/TM diversions
- Negotiations (CRCA)
- Additional Agricultural Dryup on east slope still needed
  - Alternatives concept (following) a hot item
- Reuse of available TB/TM (shuffling the deck?)
  - Prairie waters project (poster child)
  - ??