



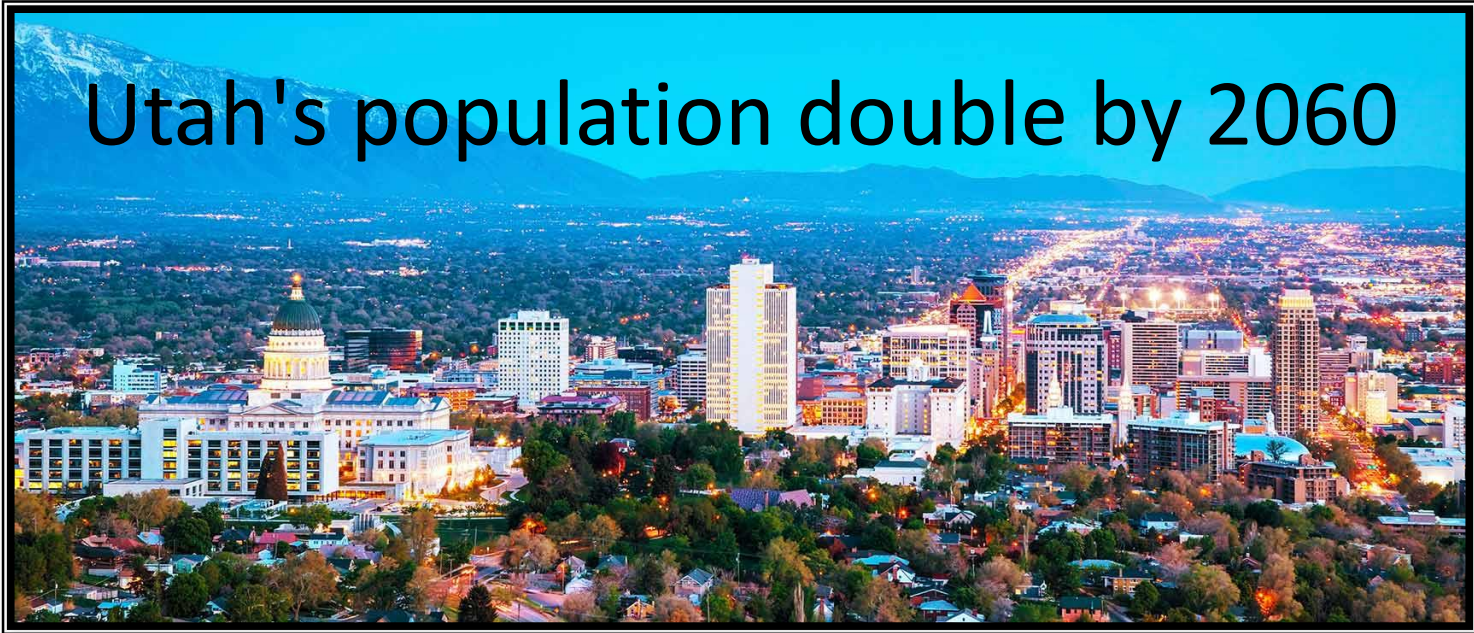
Irrigation Water Conservation, Diversion and Depletion

AWSE

James Greer

9/26/2016

Utah's population double by 2060

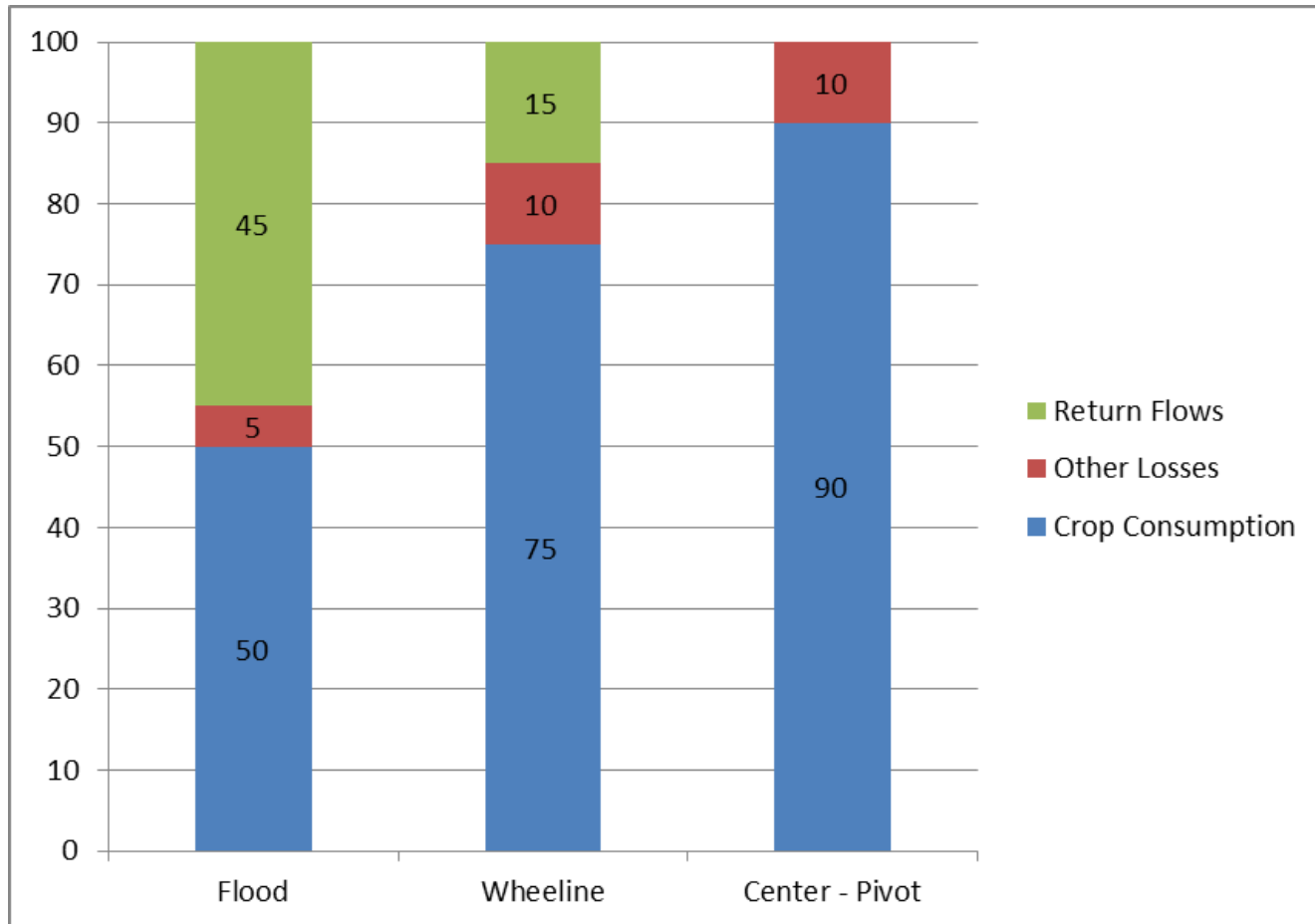


- Develop all remaining resources
- Import projects
- Conservation
- **Agriculture Conversion (80% of the Water)**

Flood



Sprinkler



Example

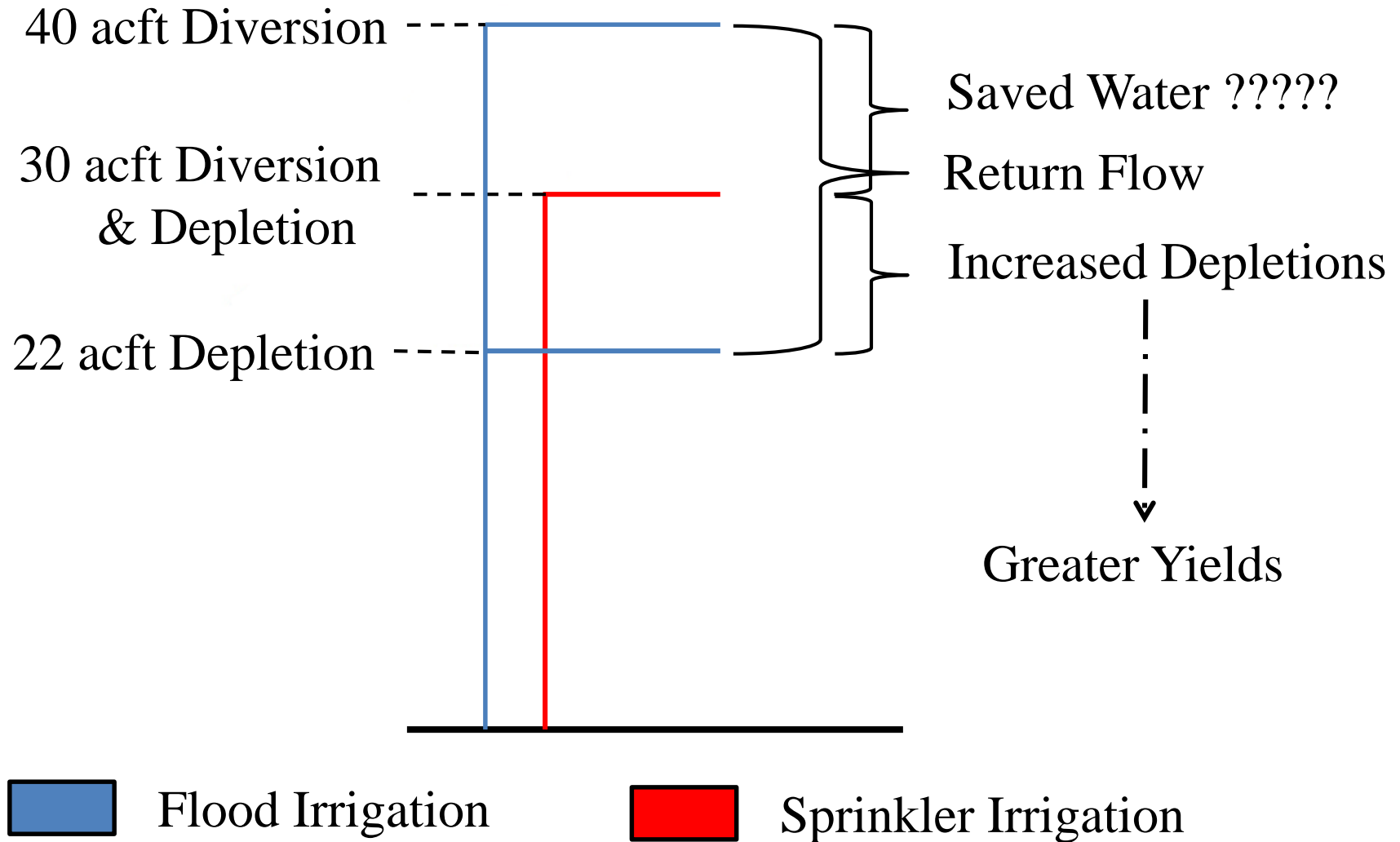
10 Acres of Alfalfa

	<u>Flood</u>	<u>Sprinkler</u>	<u>Difference</u>
Applies:	40 acft	22 acft	18 acft
Consumes:	22 acft	22 acft	0 acft
Return Flow:	18 acft	0 acft	18 acft

	<u>Flood</u>	<u>Sprinkler</u>	<u>Difference</u>
Applies:	40 acft	30 acft	10 acft
Consumes:	22 acft	30 acft	-8 acft
Return Flow:	18 acft	0 acft	18 acft

Example

10 Acres of Alfalfa



Return Flow

Down to Next User

Saved Water

Stored Above

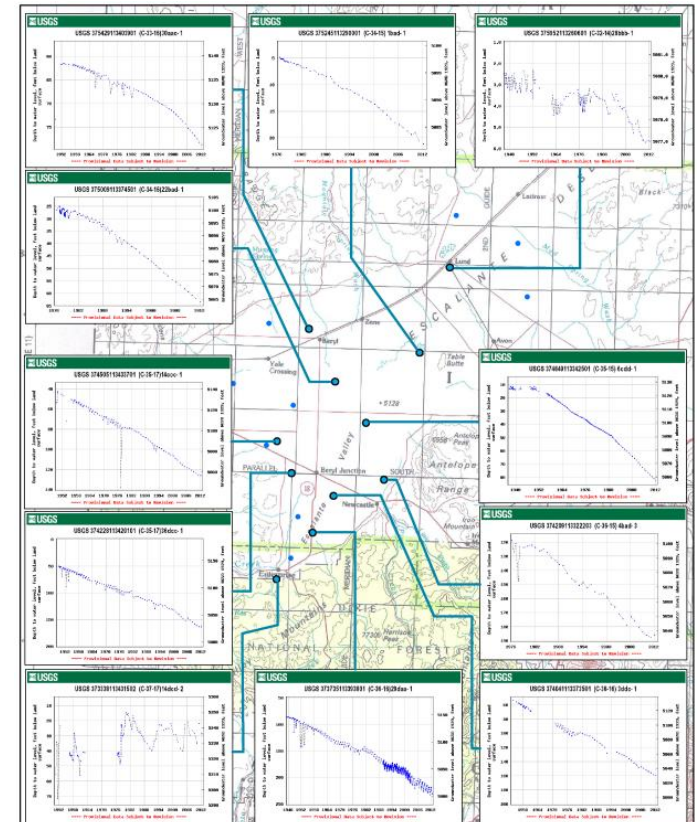
Better Water Distribution

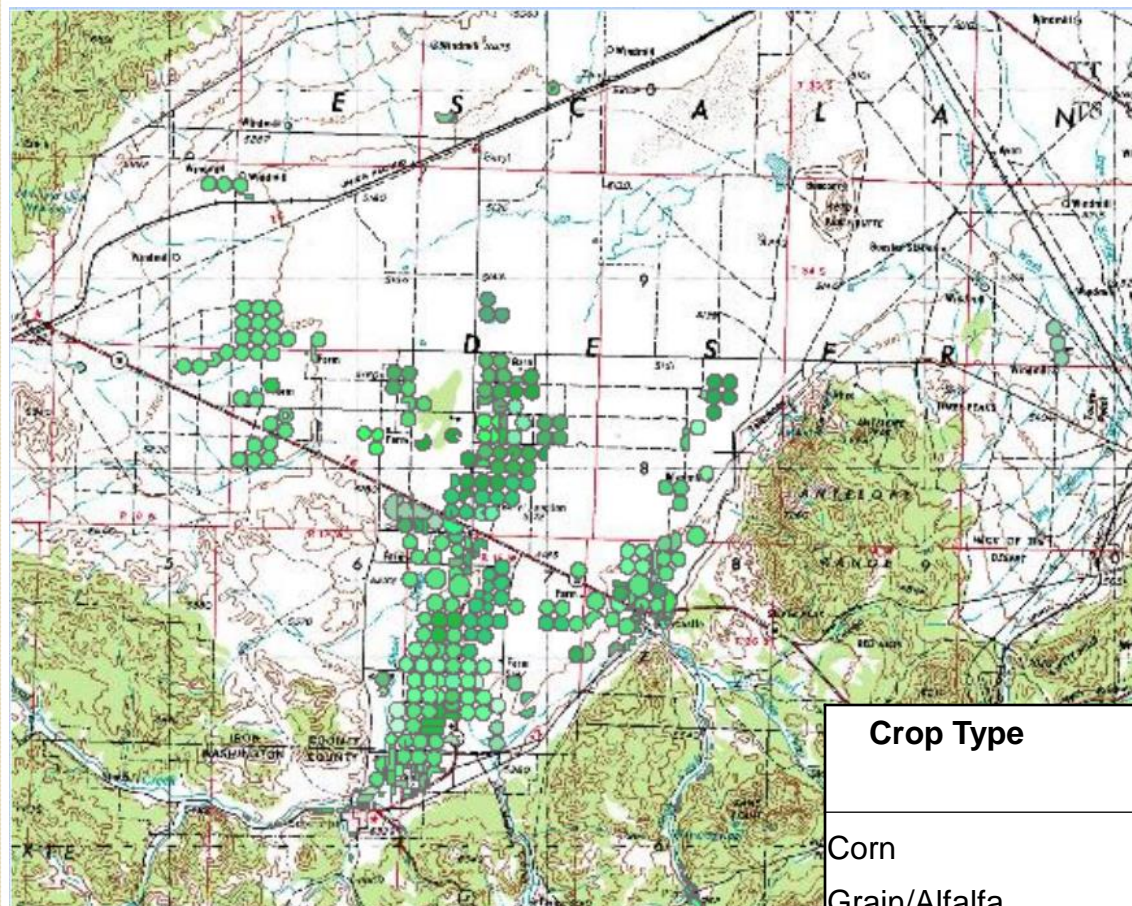
Increase Irrigated Acres

Lengthen Irrigation Season

Change Crop Type

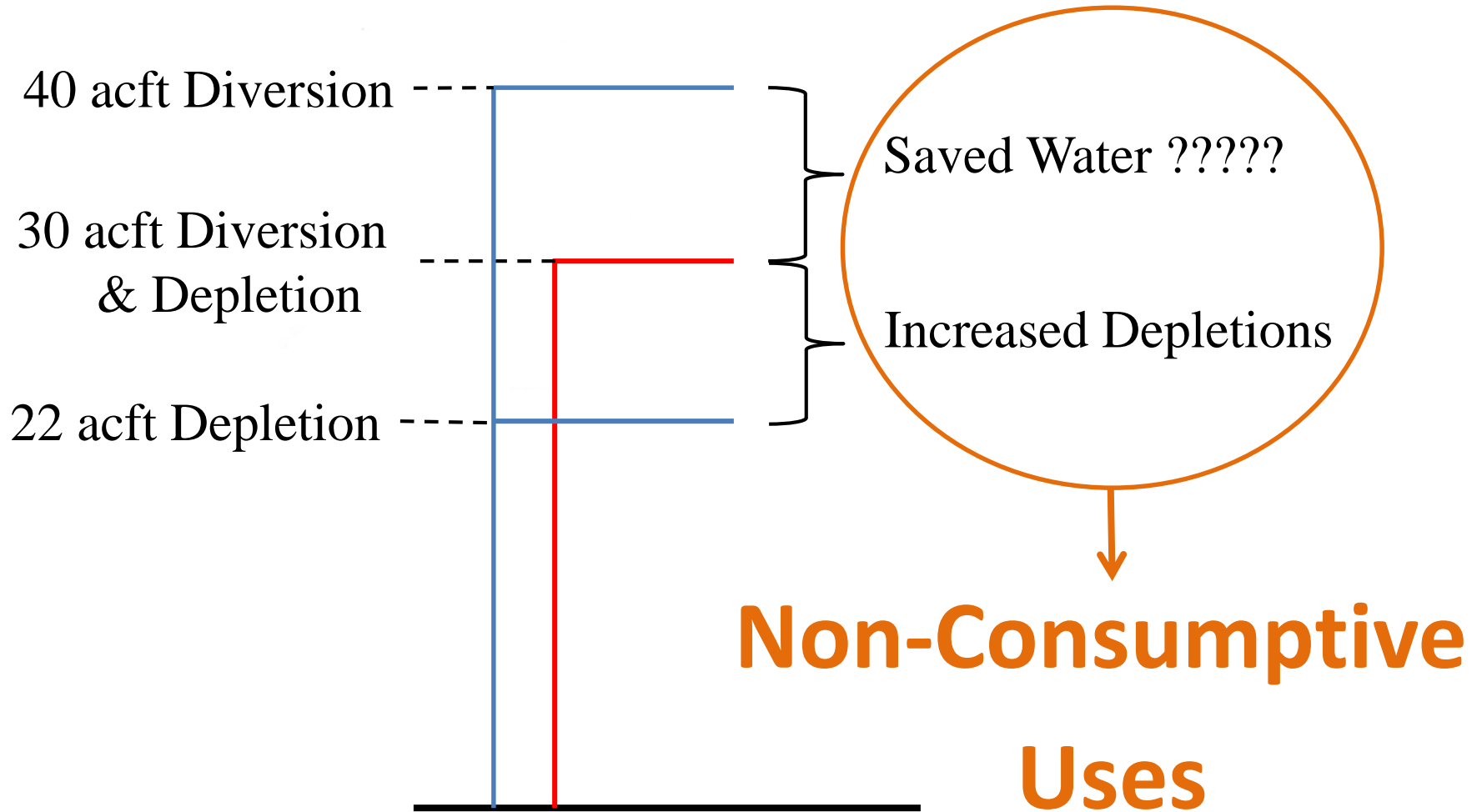
Change to more productive location





Crop Type	Acres	Net Irr (acre-feet/acre)	Consumptive Use (acre-feet)
Corn	2,978	1.3833	4,120
Grain/Alfalfa	1,829	1.8000	3,292
Grain	1,157	1.6625	1,924
Potatoes	148	1.4050	208
Alfalfa	22,922	2.4925	57,133
Total	29,034		66,676
Baseline	28,996	2.4925	72,273
Reductions			5,596

Irrigation Conservation





Round Table / Questions