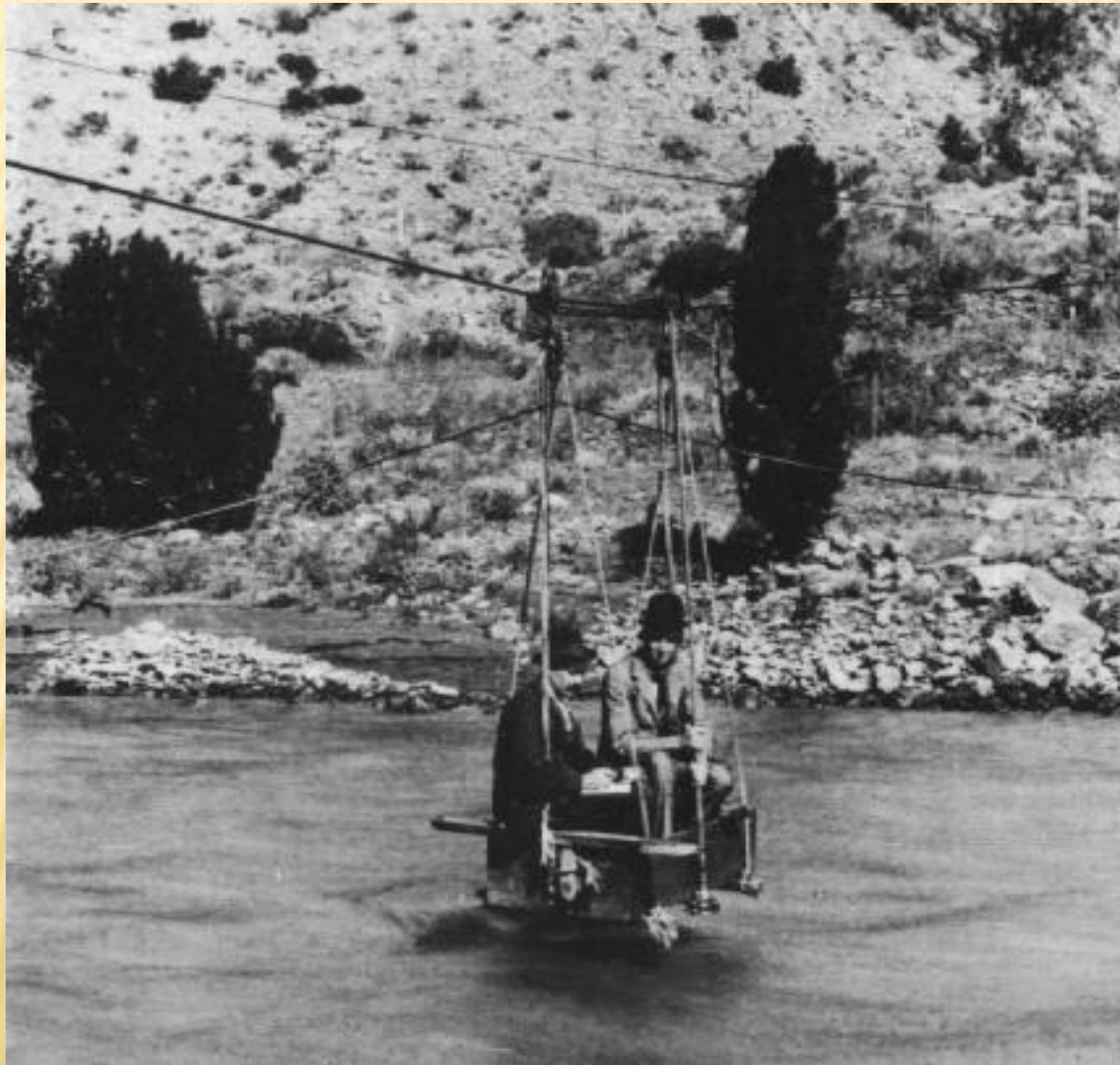
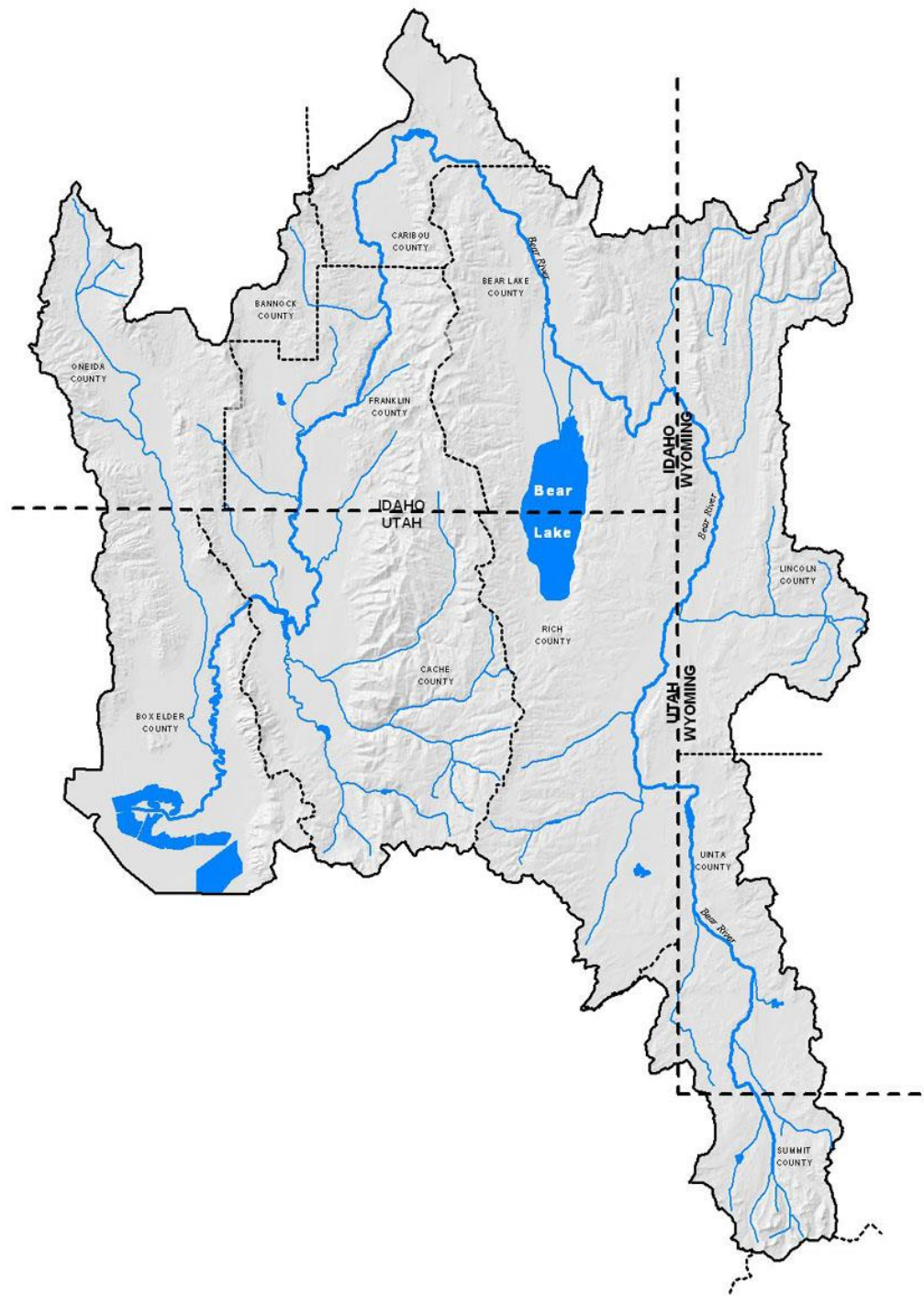


# REAL-TIME WATER MONITORING



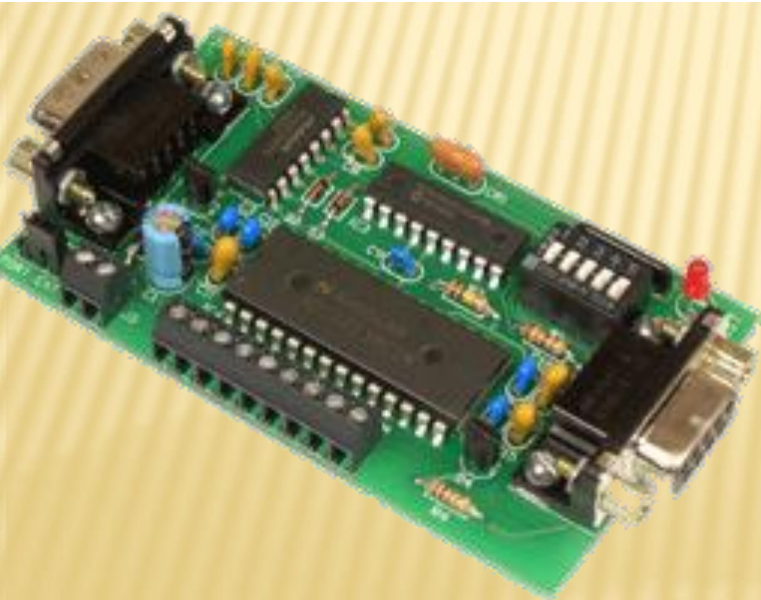
AARON HUNT P.E.







# OUR SYSTEM



# COMMUNICATIONS

---

## × Radios

- + 900 MHz
- + Repeater sites
- + Work well
- + No fees

## × Cellular

- + Coverage continues to improve
- + Monthly fees are inexpensive ~\$7/mo
- + Easy network access

## WATER RIGHTS

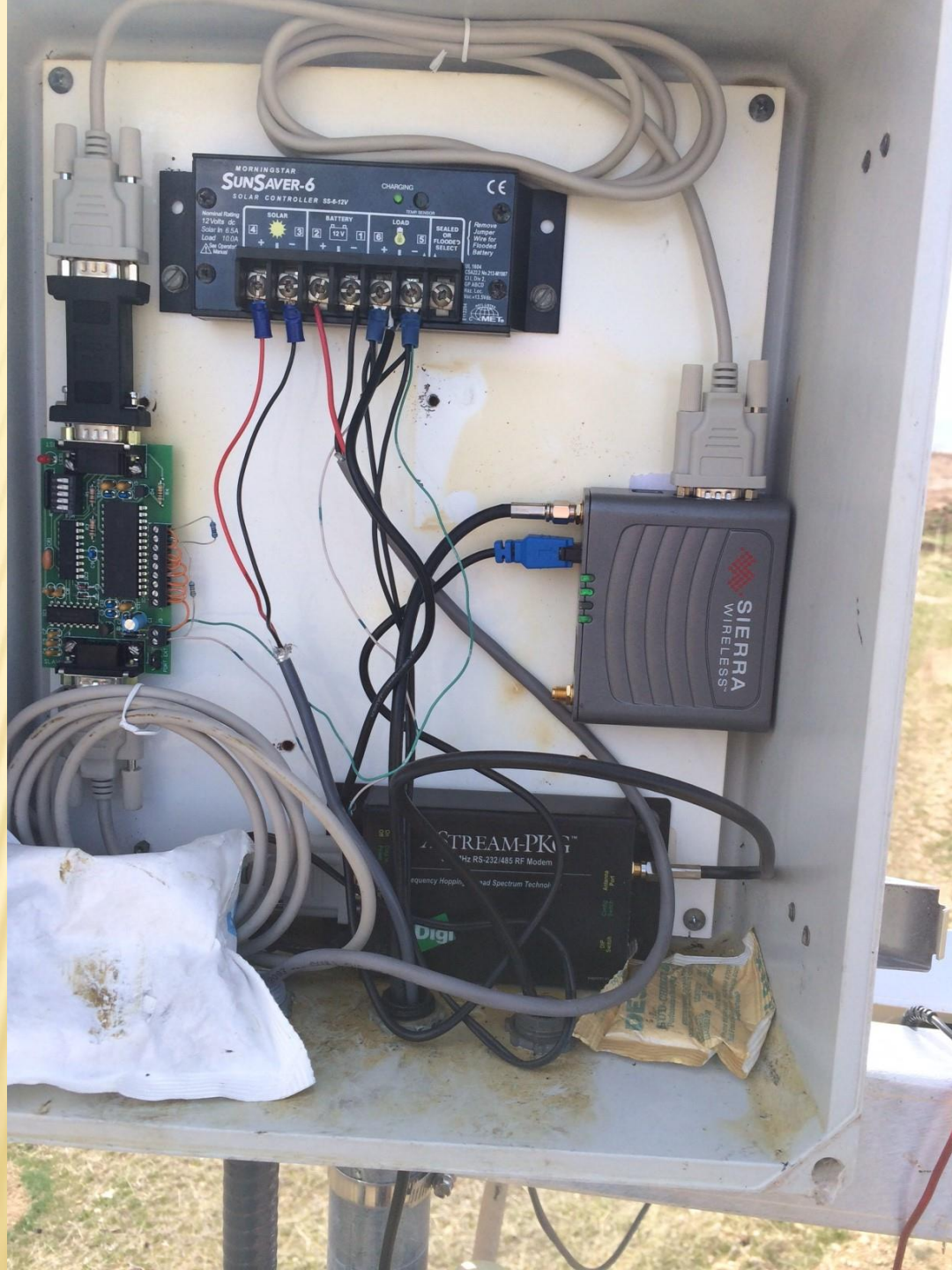
- ✖ Radio – \$80.00
- ✖ Data Card – \$100.00
- ✖ Sensor – \$Varies
- ✖ Typical site cost ~ \$1500-\$2500

## OTHERS / BUREAU OF REC

- ✖ Licensed Radio – \$275
- ✖ Modem – \$330
- ✖ Basic Logger – \$480
- ✖ Sensor – \$Varies
- ✖ Typical site cost ~ \$2500-\$3500

**COST DIFFERENCE ~\$1000**









# DATA LOGGER VS. DATA CARD





# EXACTRAQ

## Start Up Cost:

Basic Webpage (Can be customized for an additional fee)	\$1000
Annual User Account Fee	\$1000
Station Set Up Fee (1-10 stations) (\$200 per station additional fee if more than 10)	\$2000

### Per Station Annual Fee:

1-10	\$324 = \$27 per month per station
11-20	\$276 = \$23 per month per station
21-30	\$228 = \$19 per month per station
31-50	\$192 = \$16 per month per station

10 Stations Total for first year \$7240

10 Stations Total for each year after the first year \$4240

# WHERE ARE WE HEADED?

