



Mountain Home Air Force Base (MHAFB) Water Sustainability Project

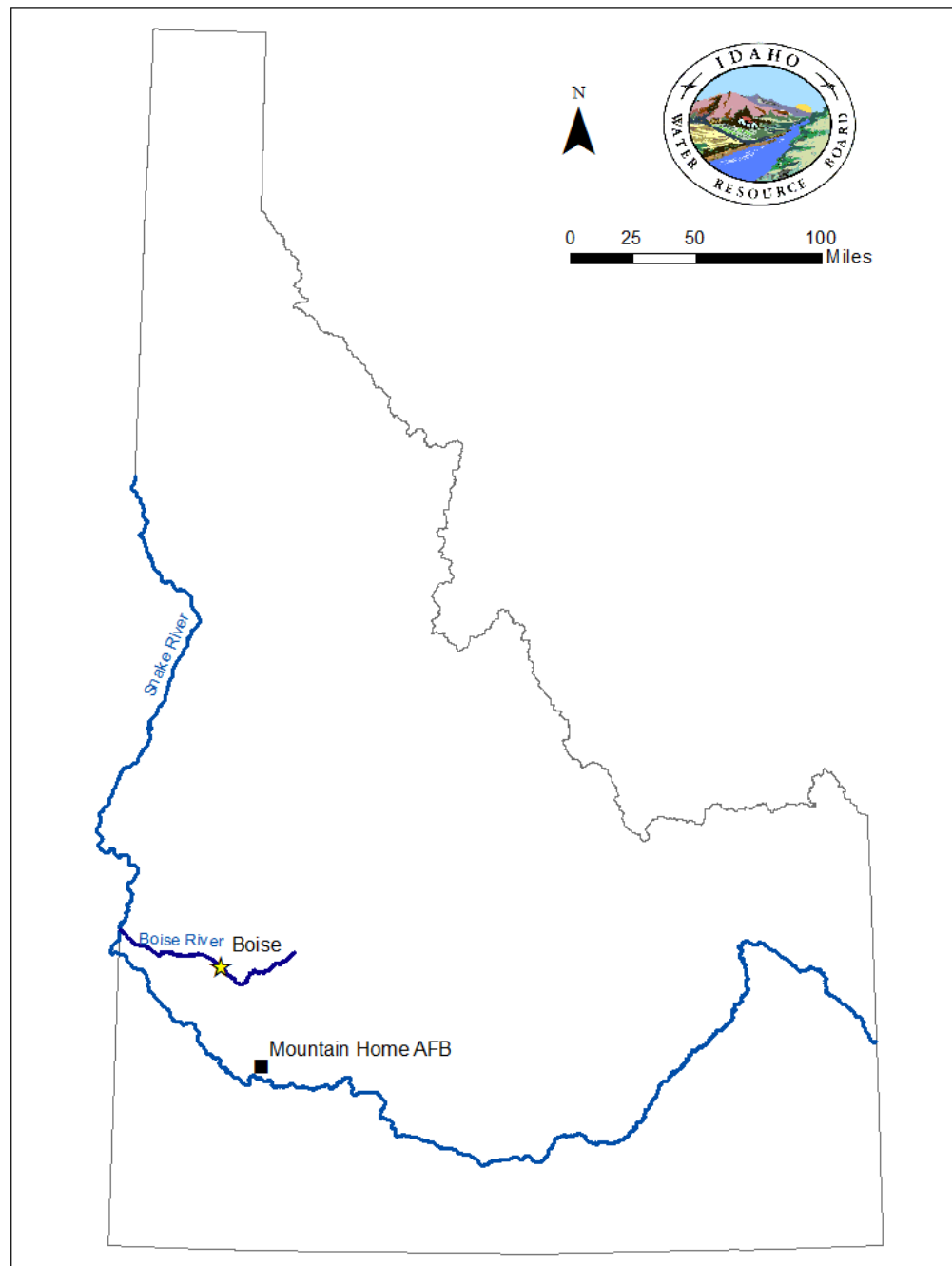
Association of Western State Engineers Workshop June 26, 2018

MHAFB Water Supply & Pipeline Project

Situation

- Role & Purpose of the Idaho Water Resource Board (IWRB)





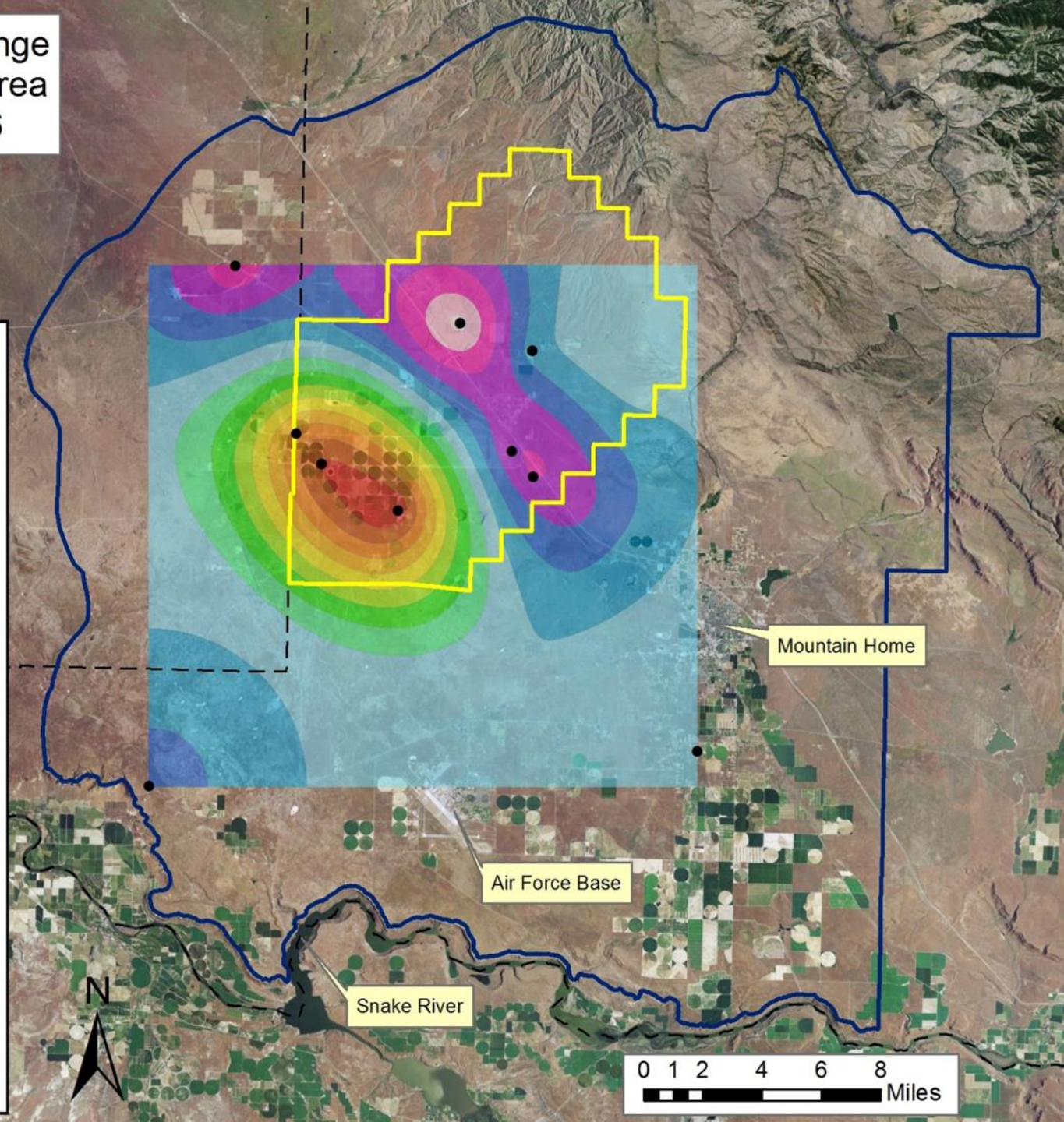
Groundwater Level Change in the Mountain Home Area Fall 1981 to Fall 2016

Legend

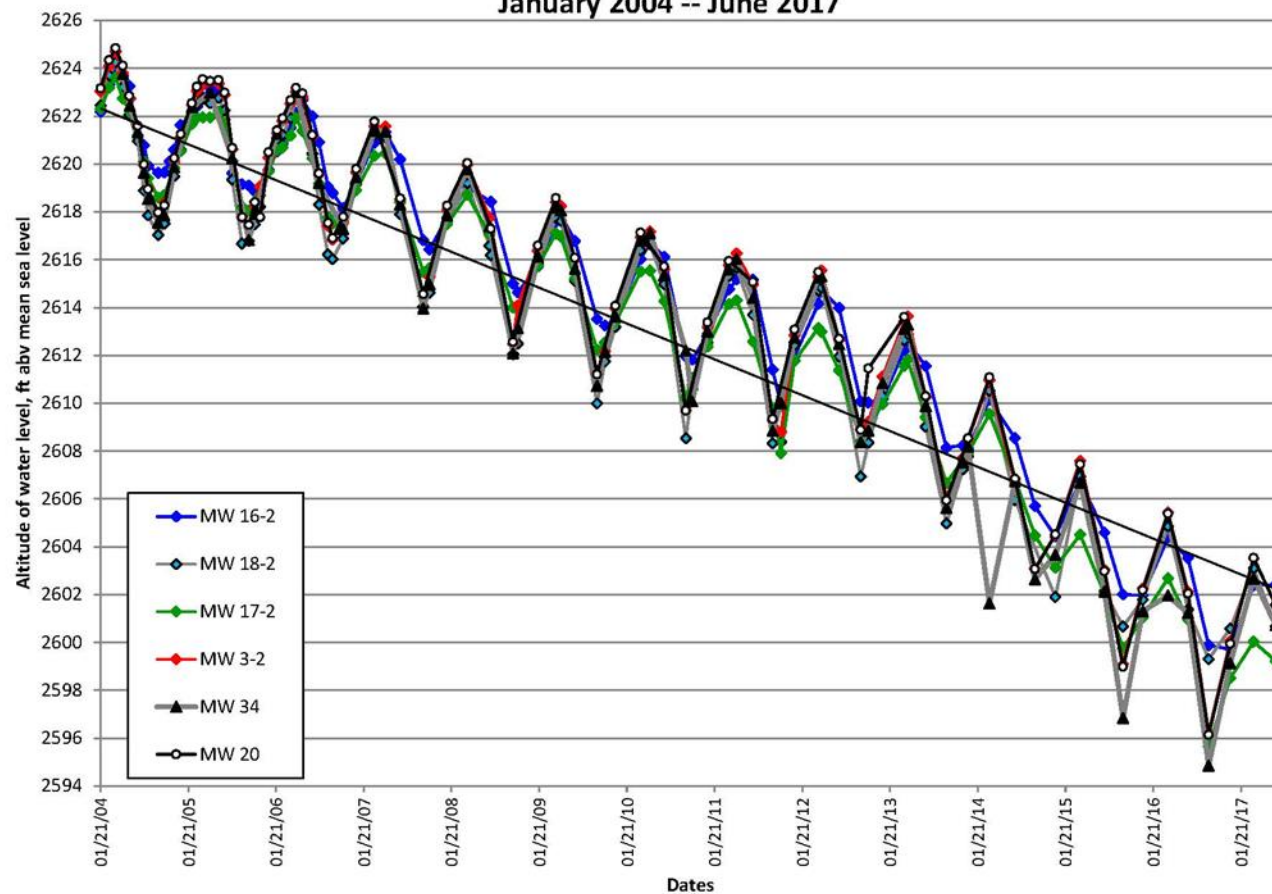
- IDWR Monitoring Wells
- ▭ Cinder Cone Butte CGWA Boundary
- ▭ Mountain Home GWMA Boundary
- - - County Boundary

Water Level Change (ft)

- Declines 120 to 130
- Declines 110 to 120
- Declines 100 to 110
- Declines 90 to 100
- Declines 80 to 90
- Declines 70 to 80
- Declines 60 to 70
- Declines 50 to 60
- Declines 40 to 50
- Declines 30 to 40
- Declines 20 to 30
- Declines 10 to 20
- Declines 0 to 10
- Rises 0 to 10
- Rises 10 to 20



Altitude of water-levels, MHAFB monitoring wells
January 2004 -- June 2017





MHAFB Water Supply & Pipeline Project

Project Vision

- Original Feasibility Study by MHAFB
- State Support for the Project Feasibility
- Project Concept



MHAFB Water Supply & Pipeline Project

Project Implementation & Status

- Water Utility Service Contract (WUSC) being negotiated
- Project Delivery Selection and Status
- Environmental Assessment
- Project Award in 2019
- Project Completion Expected in 2021



MHAFB Water Supply & Pipeline Project

Lessons Learned & Take Aways

- Collaboration is Key When Solving Complex Problems
- Adapt When Unanticipated Constraints Arise
- Patience



MHAFB Water Supply & Pipeline Project

Questions?

