

# UTAH'S EXPERIENCES WITH WASTEWATER REUSE AS A WATER SUPPLY REBALANCING ACT



Michael Drake, P.E.  
Weber River/Western Regional Engineer

# Presentation Outline

- ⦿ Reuse Challenges
- ⦿ Statutory Background
- ⦿ Statutory Summary
- ⦿ Selected Projects
  - 16 Projects filed between 1999 and 2010
- ⦿ Future Outlook
  - Reuse coming in different “flavors”

# Reuse Challenges

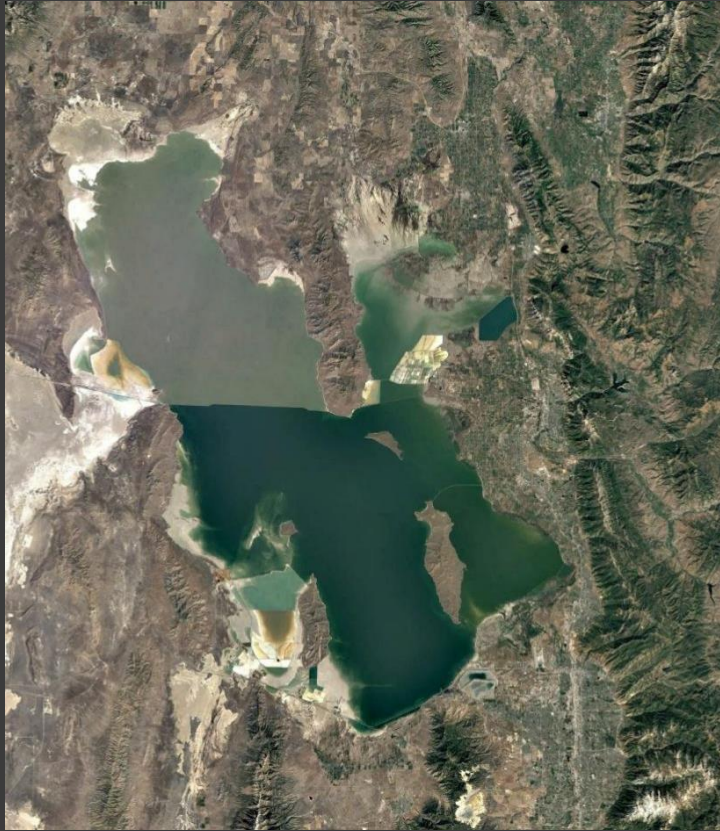


- The Great Salt Lake is the bottom of an Endorheic Basin.
- Many of the hydrologic basins within the Wasatch Front are over-appropriated.

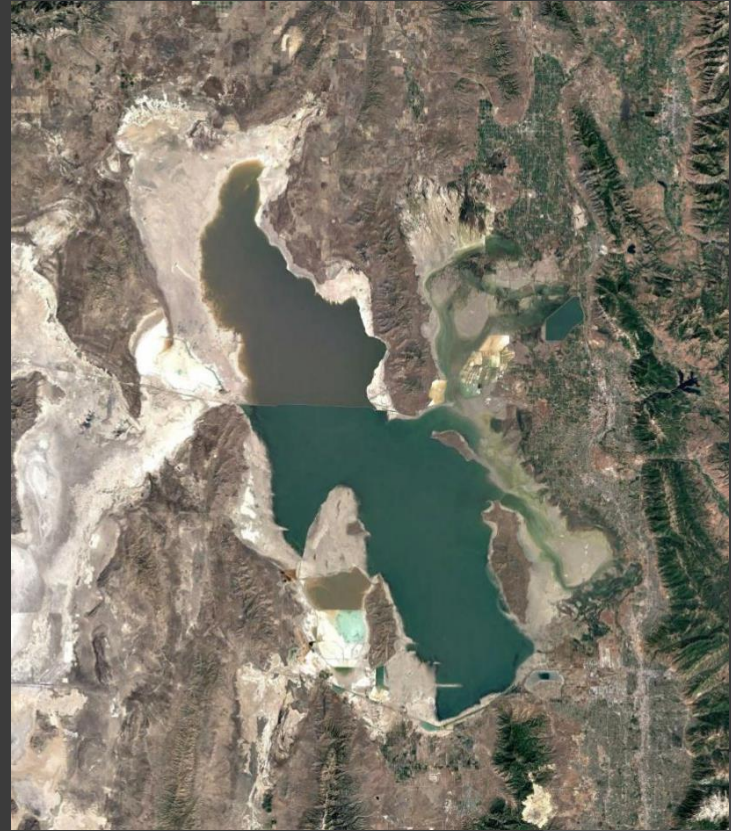
- Roughly 80% of Utah's population lives on the Wasatch Front



# Great Salt Lake



2000



2016

# Statutory Background

- Pre-statutory Reuse Projects
- Conservation and Use of Sewage Effluent Act of 1995
- Administrative Rules for Reuse in 2003
- Water Reuse Act of 2006



# Statutory Summary

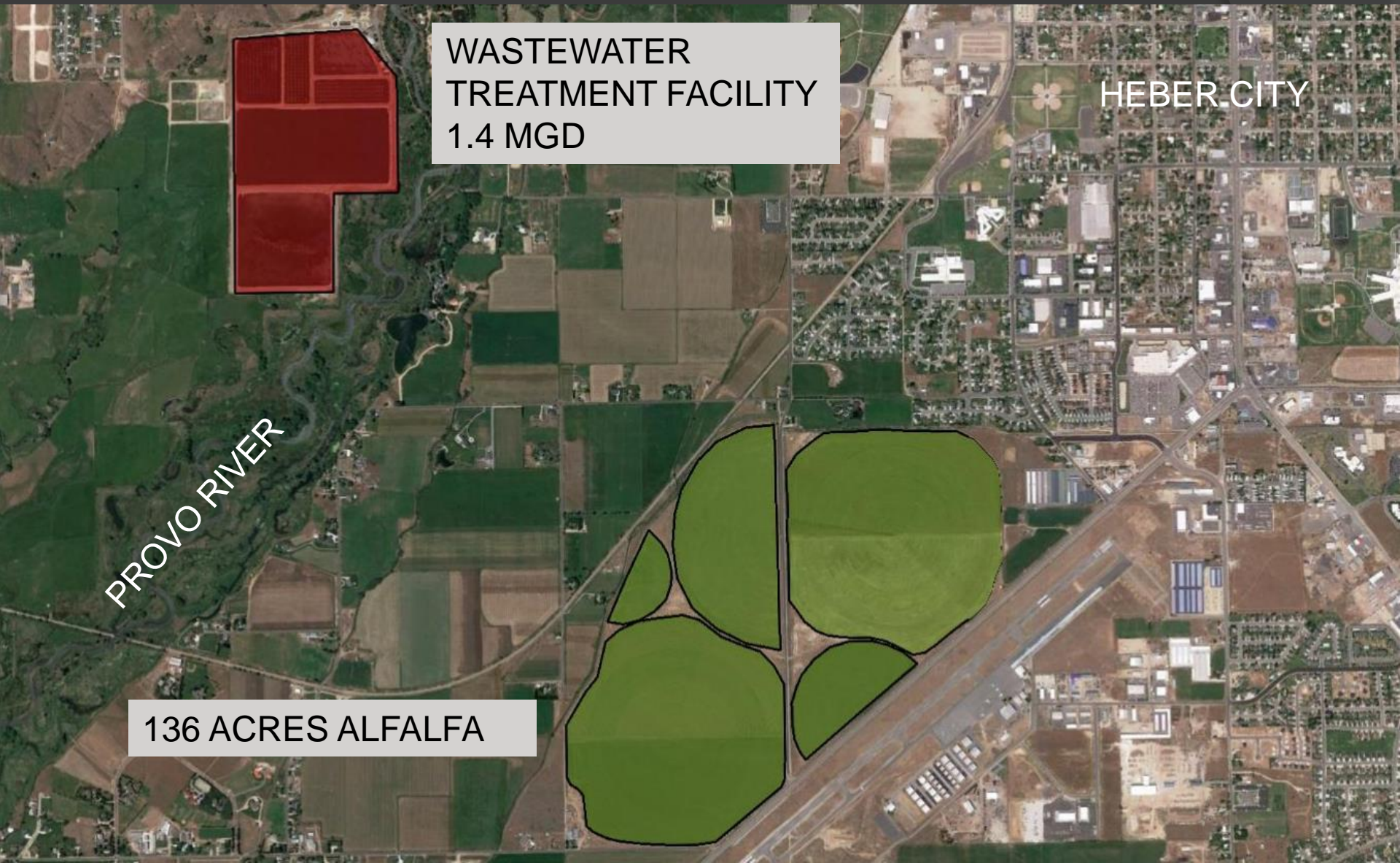
## ⦿ Who can apply?

- Public Agencies
  - Must maintain control of water

## ⦿ Application Process:

- Application to Water Quality Board
- Application to the State Engineer
  - Application
  - Advertising
  - Protest Period
  - Informal Hearing
  - Order of the State Engineer

# Heber Valley SSD



WASTEWATER  
TREATMENT FACILITY  
1.4 MGD

HEBER CITY

PROVO RIVER

136 ACRES ALFALFA



# Tooele City



154 ACRE GOLF COURSE

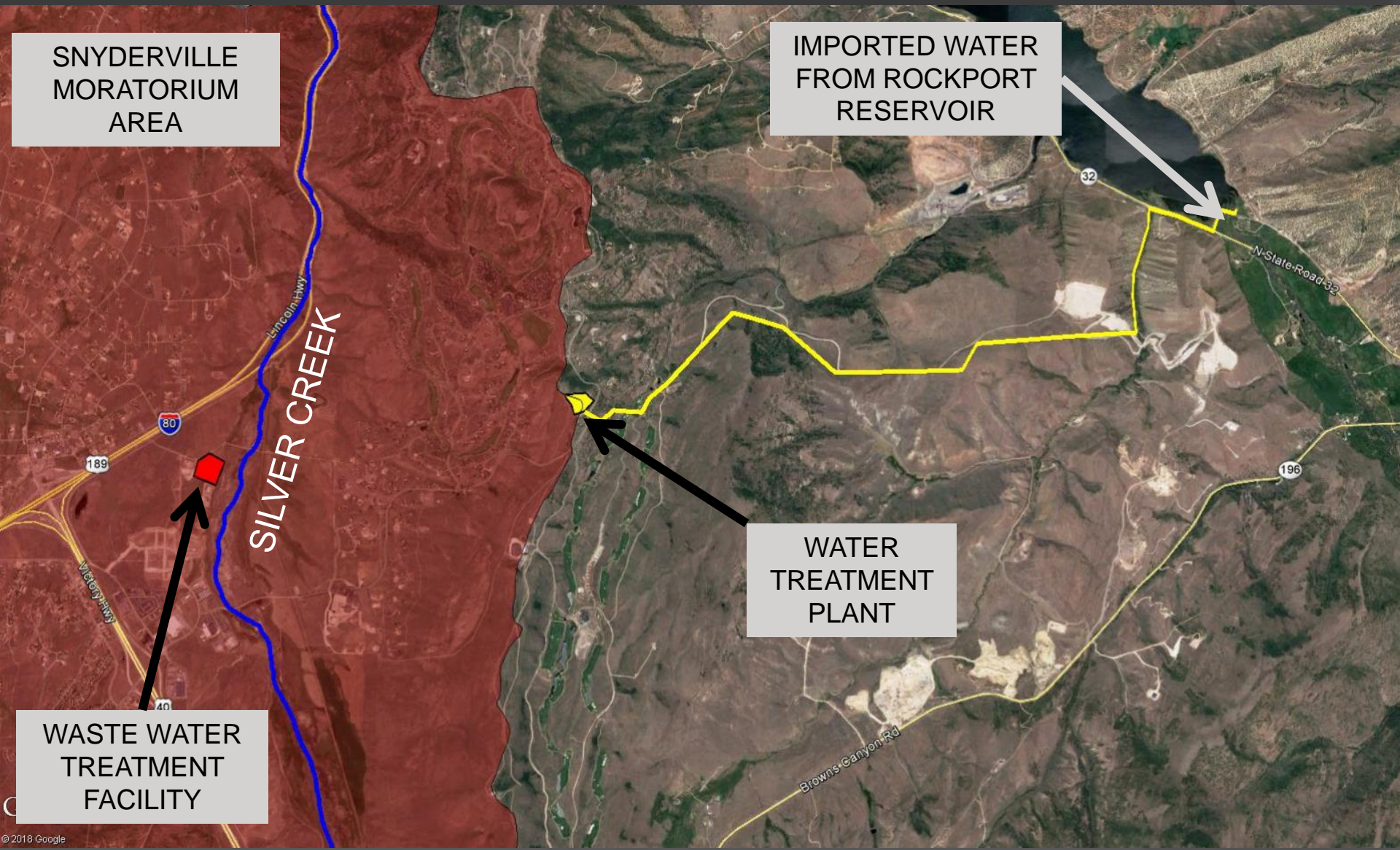
WASTEWATER  
TREATMENT FACILITY  
1.4 MGD



# Future Reuse Outlook

- ⦿ Last Reuse Application filed in 2010
- ⦿ Current projects bring interesting wrinkles to wastewater reuse.
- ⦿ Examples
  - Mountain Regional Water District – mixes reuse thinking with imported water accounting.
  - Provo City – Exploring wastewater reuse mixed with aquifer storage/recovery.

# Mountain Regional Water District



# Provo City

- ◎ The Proposal:

- Combine sewer reuse with aquifer storage and recovery.



- ◎ Has the public agency “lost control” of the water in an aquifer storage project?





QUESTIONS?