

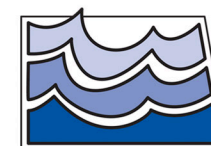
**ASSOCIATION
OF WESTERN
STATES
ENGINEERS**

AN UPDATE

NORTH DAKOTA WATER MANAGEMENT & DEVELOPMENT

Garland Erbele, P.E.,
State Engineer & Chief Engineering-Secretary

August 2017



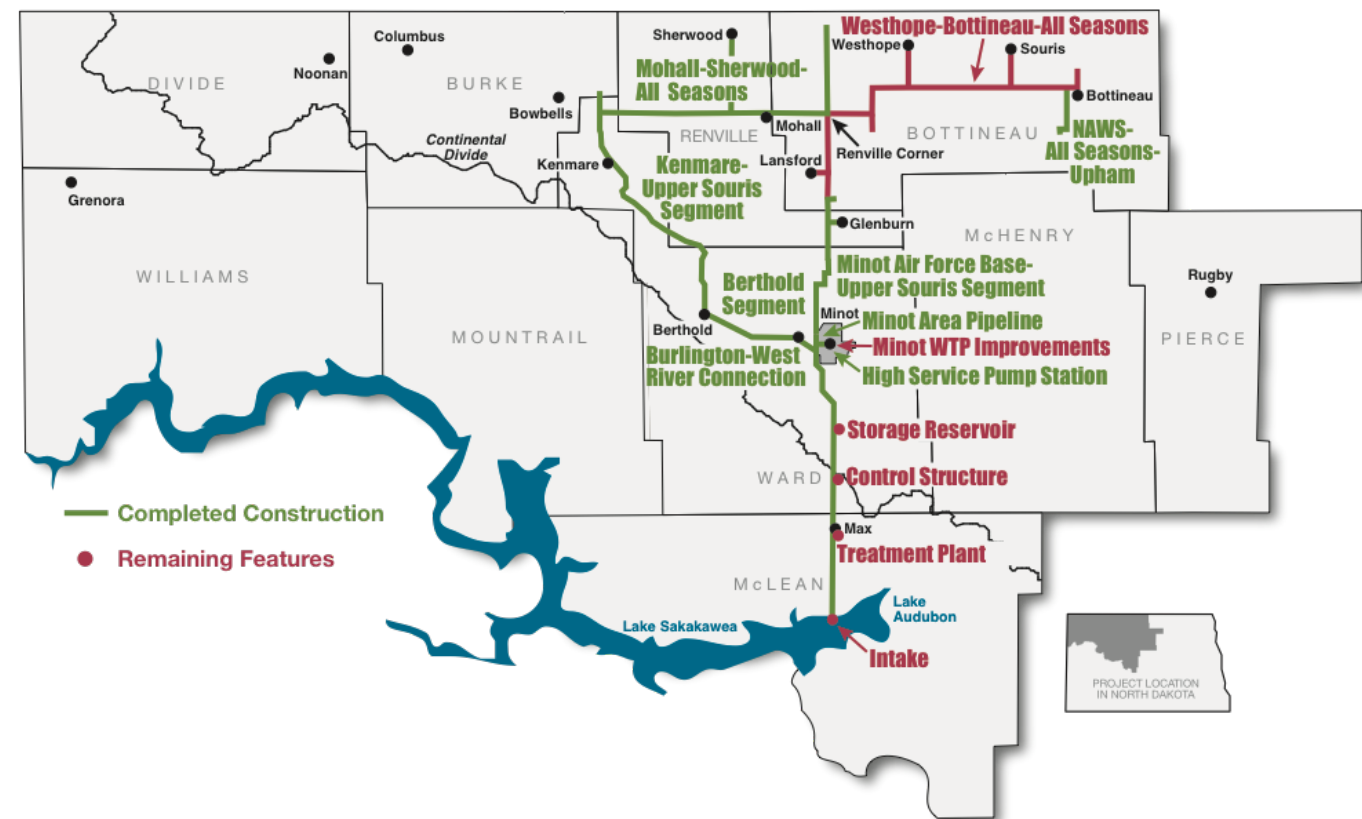
**North Dakota
State Water Commission**

2017-2019 STATE WATER COMMISSION PROJECT BUDGET

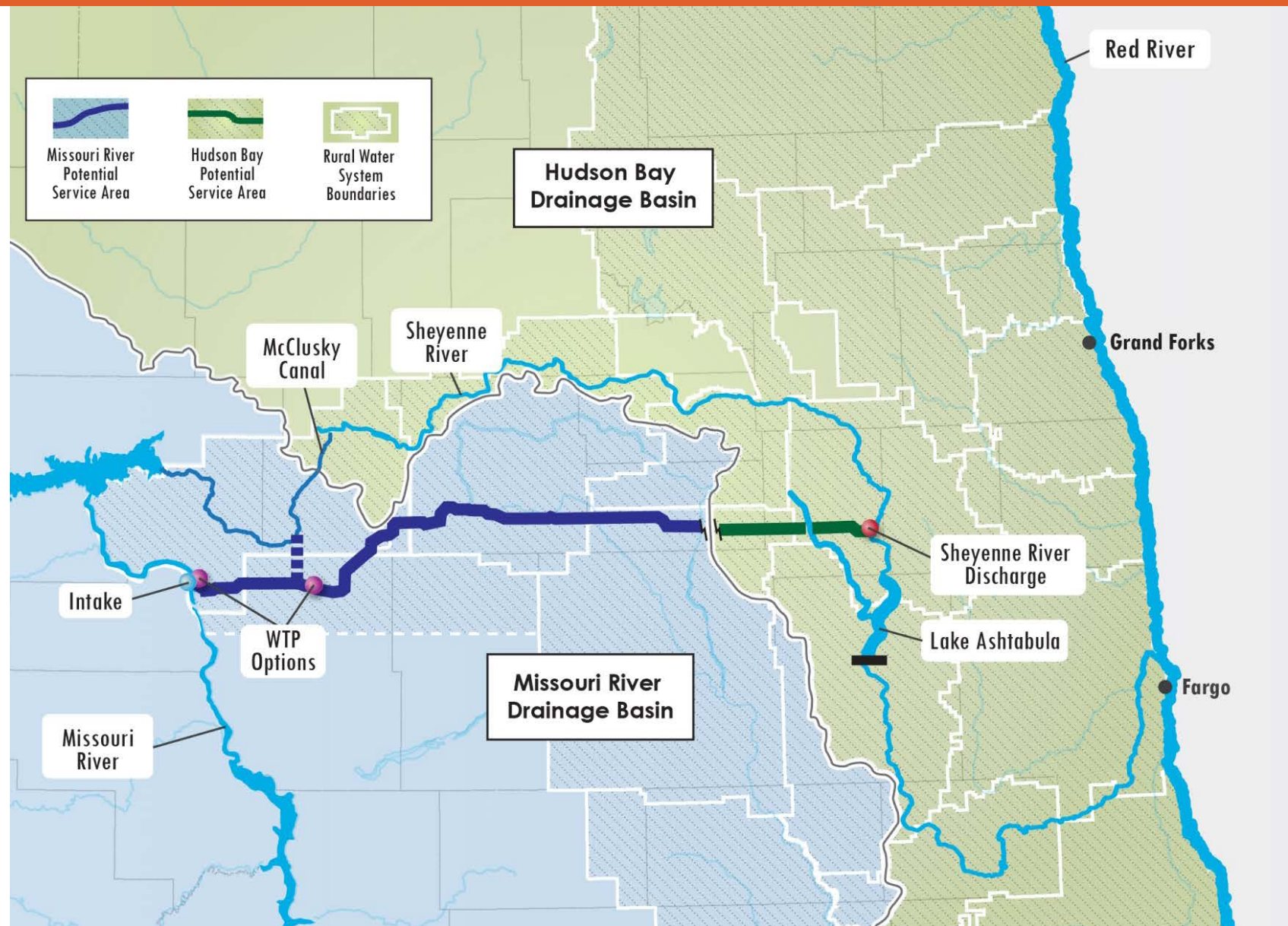
New 2017-2019 Project Funding House Bill 1020	
Projects	HB 1020
Water Supply	\$120M
Rural Water	\$27M
Flood Control	\$136M
General Water Management	\$16M
PROJECT FUNDING TOTAL	\$299M

NORTHWEST AREA WATER SUPPLY

- Federal/State Project To Deliver Missouri River Water To Northcentral ND
- In 2022, Lawsuits Were Initiated By Canada & Missouri & Continue To Present
- Under Court Approval, Some Works Have Been Constructed
- August 10 - U.S. District Court In Washington D.C. Issued A Motion Allowing The State & U.S. Dept. Of Interior To Move Forward With Construction
- Will Be Of Sufficient Size To Deliver A Maximum Daily Flow Of 26 Million Gallons Per Day To 81,000 People

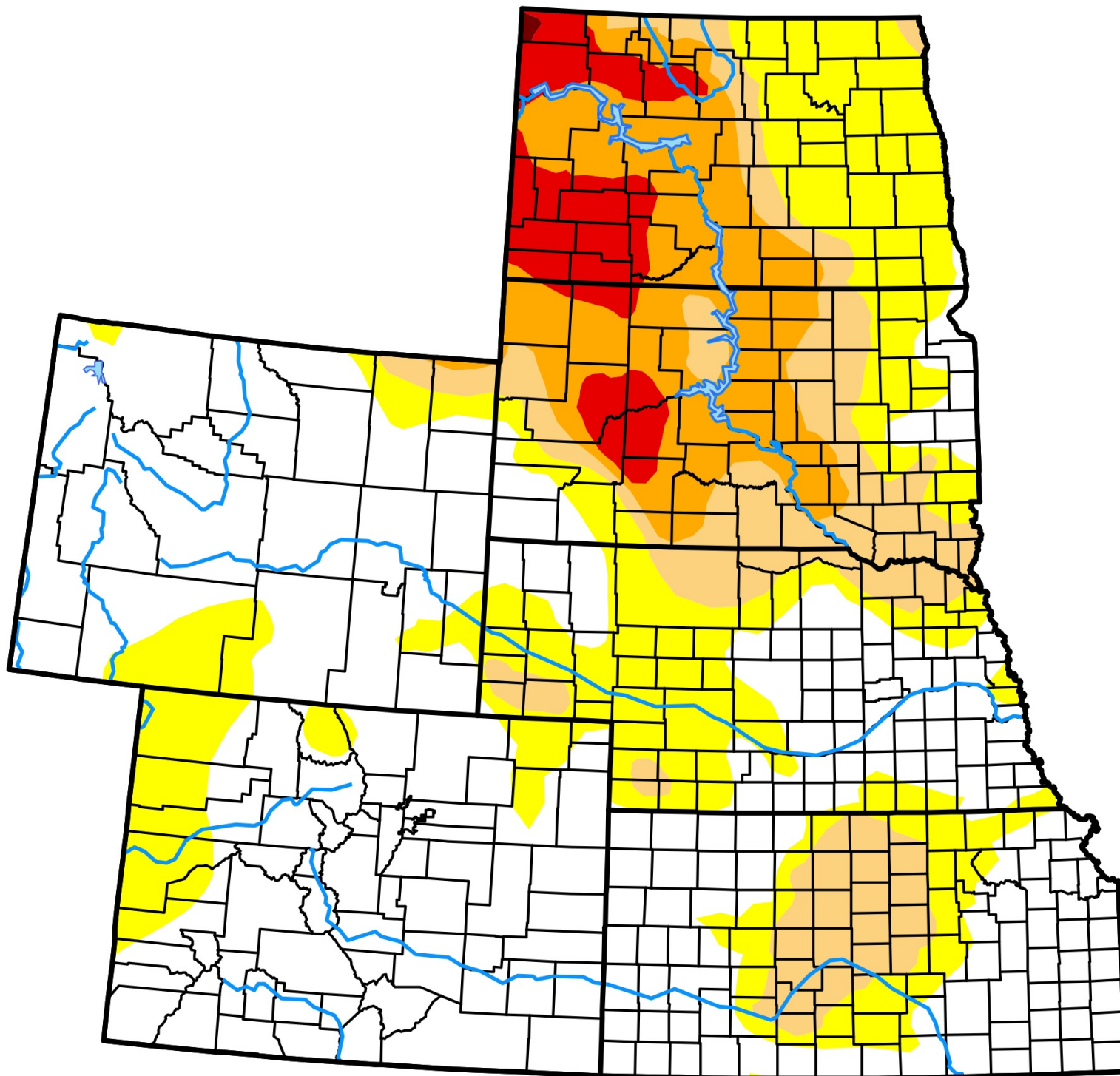


RED RIVER VALLEY WATER SUPPLY PROJECT



- Purpose Is To Deliver Missouri River Water To Central & Eastern ND
- Was Once A Federal Project – Has Become A State & Local Project
- Looking At Various Options For Delivery Of Approx. 160 cfs

US DROUGHT MONITOR, HIGH PLAINS



August 22, 2017

(Released Thursday, Aug. 24, 2017)

Valid 8 a.m. EDT

Drought Conditions (Percent Area)

	None	D0-D4	D1-D4	D2-D4	D3-D4	D4
Current	52.57	47.43	24.99	13.93	4.16	0.05
Last Week <i>08-15-2017</i>	49.29	50.71	28.68	16.37	6.96	0.71
3 Months Ago <i>05-23-2017</i>	83.84	16.16	1.93	0.00	0.00	0.00
Start of Calendar Year <i>01-03-2017</i>	50.65	49.35	21.54	3.85	0.00	0.00
Start of Water Year <i>09-27-2016</i>	70.86	29.14	8.66	2.68	0.17	0.00
One Year Ago <i>08-23-2016</i>	64.09	35.91	11.42	4.08	0.72	0.00

Intensity:

D0 Abnormally Dry	D3 Extreme Drought
D1 Moderate Drought	D4 Exceptional Drought
D2 Severe Drought	

The Drought Monitor focuses on broad-scale conditions. Local conditions may vary. See accompanying text summary for forecast statements.

Author:

Chris Fenimore
NCEI/NESDIS/NOAA



<http://droughtmonitor.unl.edu/>

2017 DROUGHT RESPONSE

Drought Disaster Livestock Water Supply Program

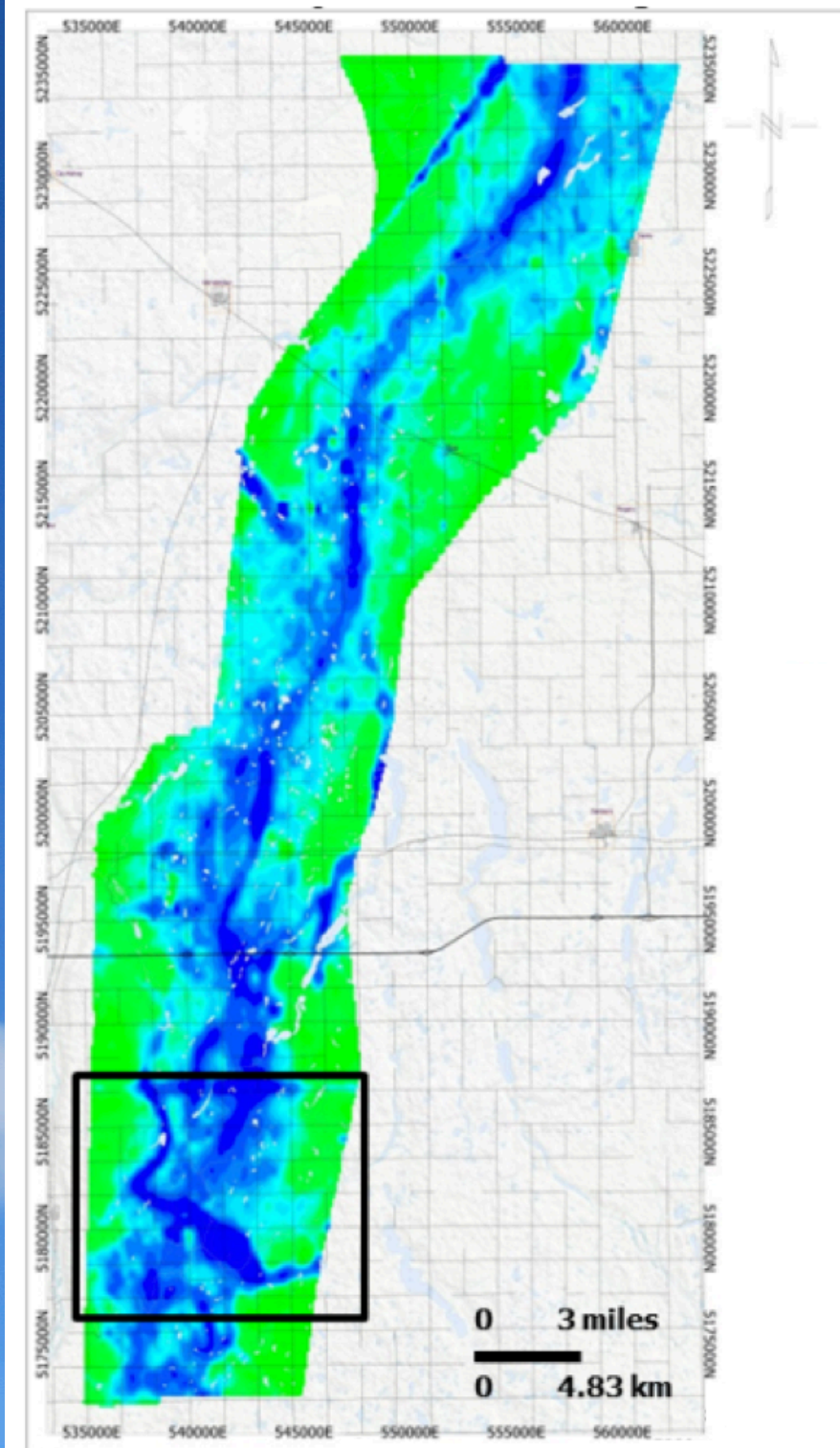


- Reactivated In June
- SWC Approved \$1.3M To Date
- Provides Assistance To Producers To Develop Long-Term Drought Resilient Water Supplies
- 50% Cost-Share, Up To \$3,500/Project, 3 Projects Per Producer

AIRBORNE ELECTROMAGNETIC SURVEYING



IMAGE OF AQUIFER AT 300 FEET BELOW LAND SURFACE

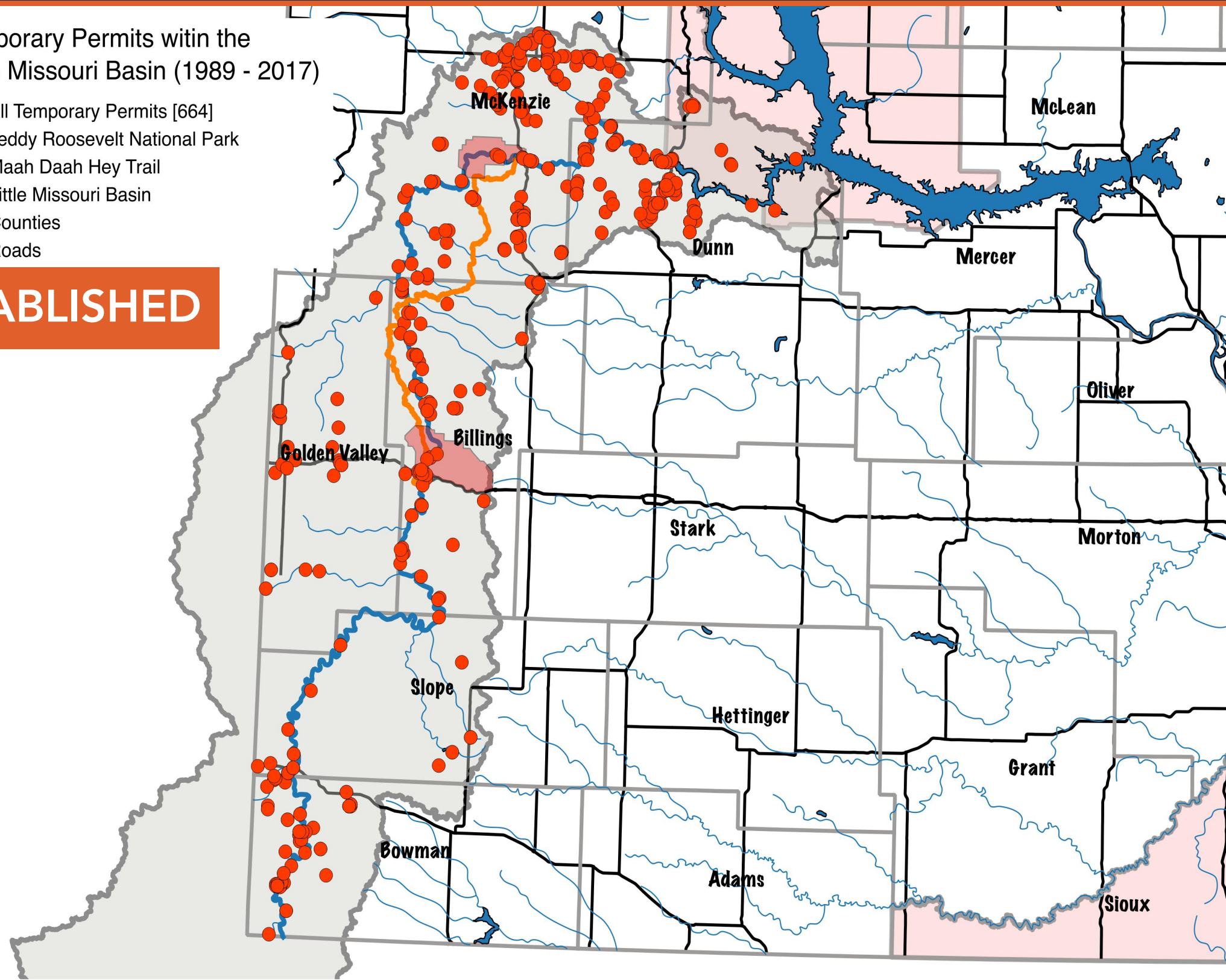


LITTLE MISSOURI RIVER COMMISSION (LMRC)

Temporary Permits within the
Little Missouri Basin (1989 - 2017)

- All Temporary Permits [664]
- Teddy Roosevelt National Park
- Maah Daah Hey Trail
- Little Missouri Basin
- Counties
- Roads

RE-ESTABLISHED



LMRC CONTINUED



- LMRC Asked To Consider Input On OSE's Revised Interim Policy For Issuing Temp Industrial Permits In LMR Basin
- Existing Temp Permits Contingent On Flow Conditions

THANK YOU!

Garland Erbele, P.E., State Engineer & Chief Engineer-Secretary
(701) 328-4940 / swc@nd.gov

Keep Connected

Website: www.swc.nd.gov



www.facebook.com/NDStateWater



The Current Newsletter: TheCurrent@nd.gov