

# BUILDING A WATER SUPPLY PIPELINE IN THE 21<sup>ST</sup> CENTURY

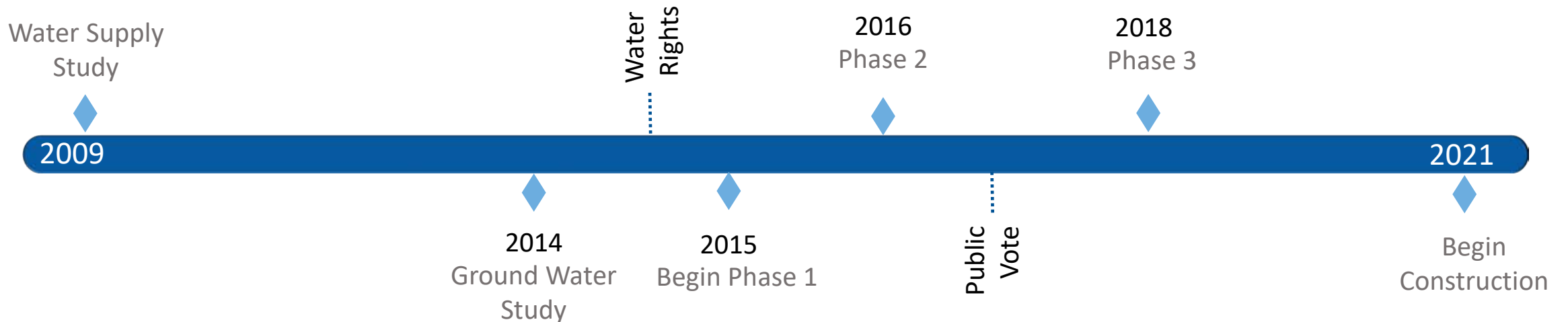
---



# PURPOSE



- To Provide an Alternate Source of Drinking Water to Supplement the City's Current Supply
- To Reduce the Demand on the Groundwater Well Fields
- Diversification of the Water Supply Increases the Reliability of that Supply

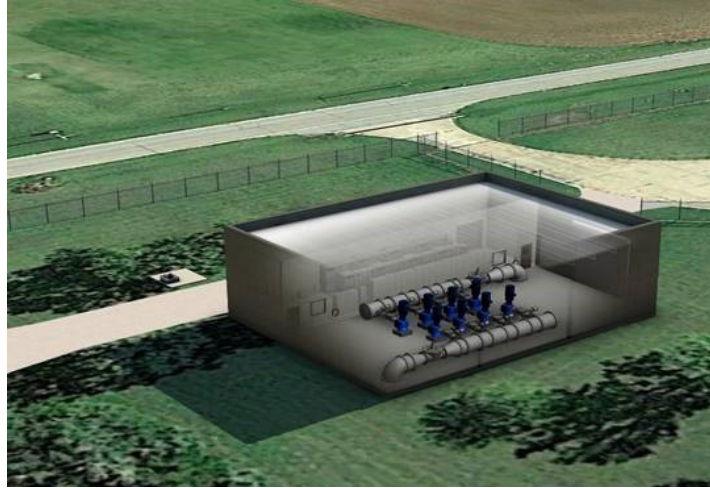


# PROGRAM OVERVIEW

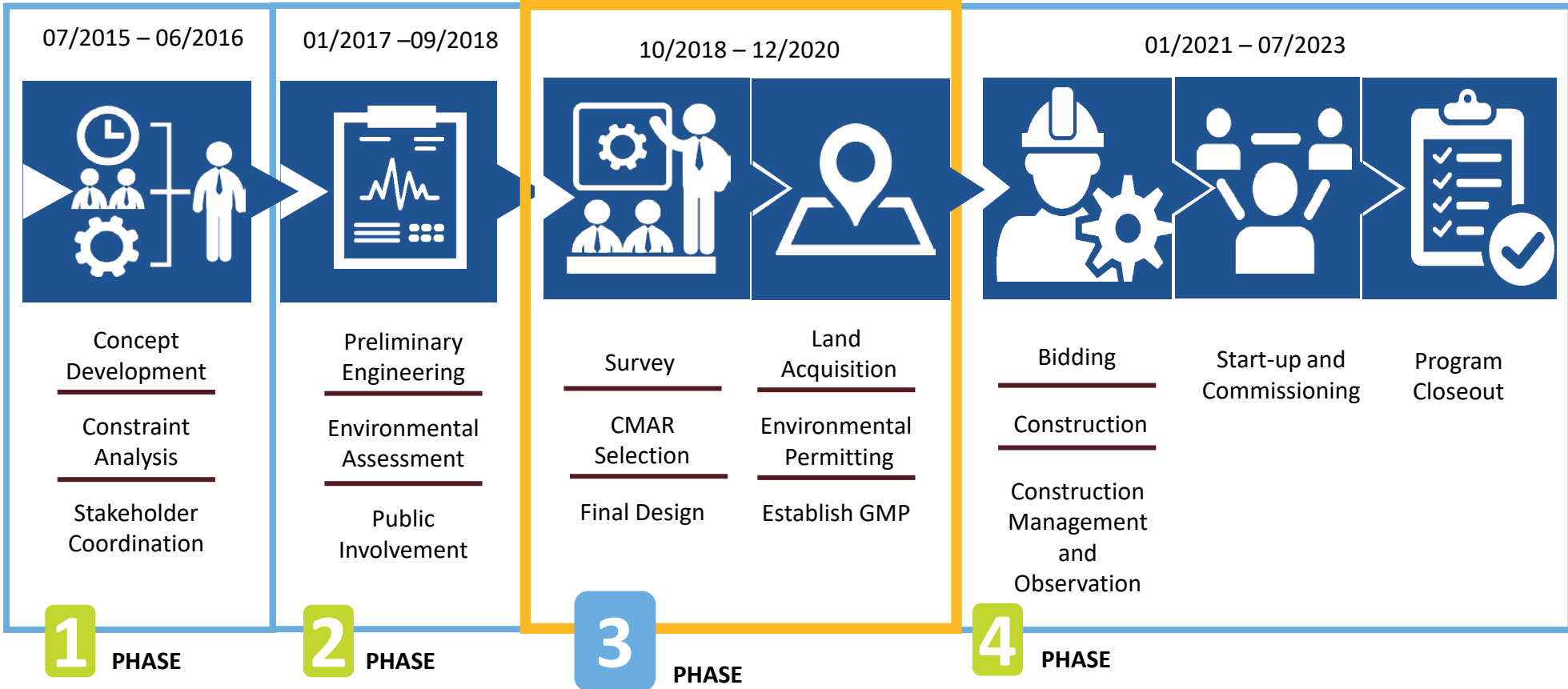
---



- Provide water from Kaw Lake to the City of Enid
- Major Components
  - Intake structure at Kaw Lake
  - 70 mile pipeline
  - Water Treatment Plant
  - Distribution System Connection

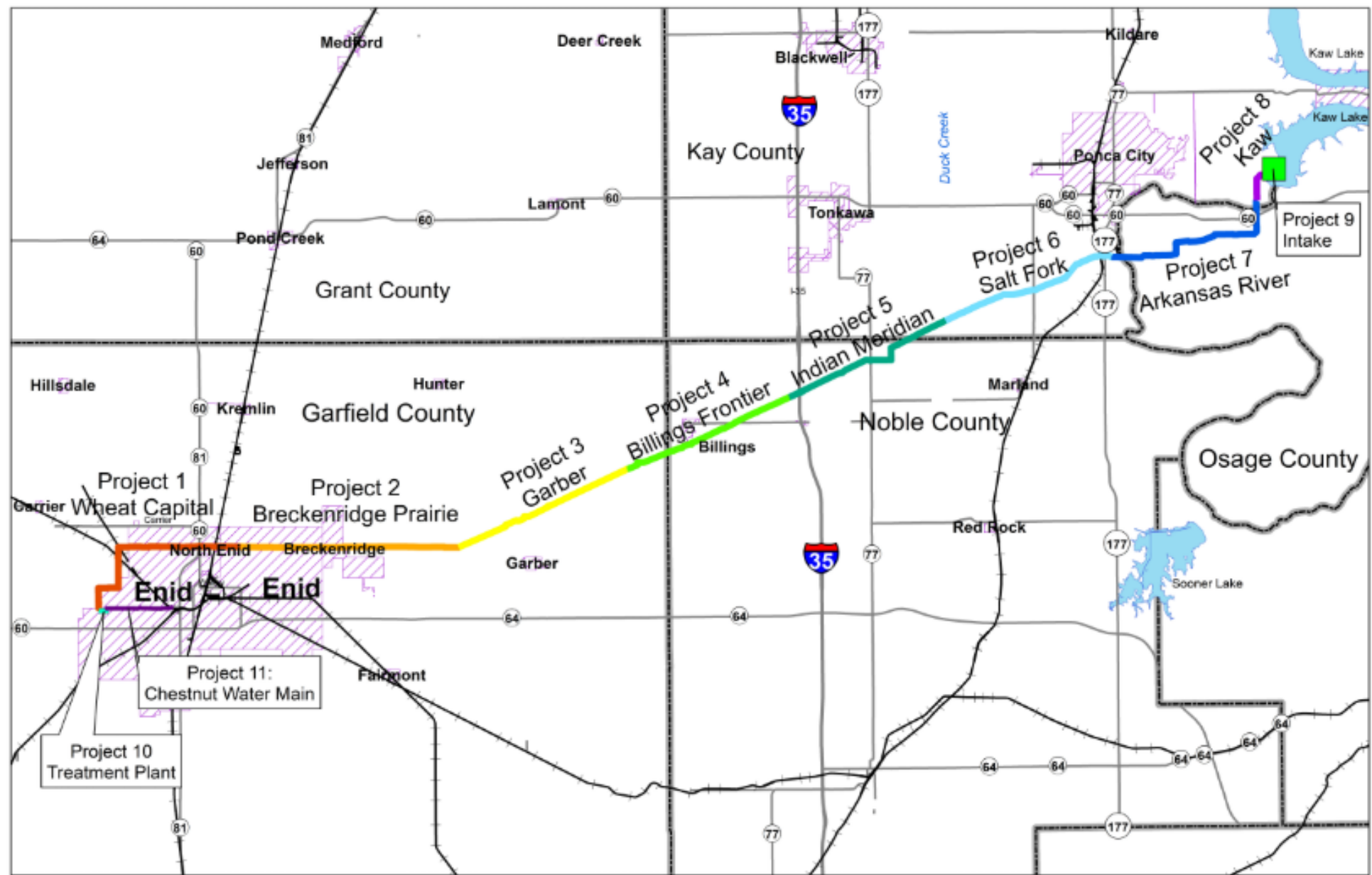


# PHASING



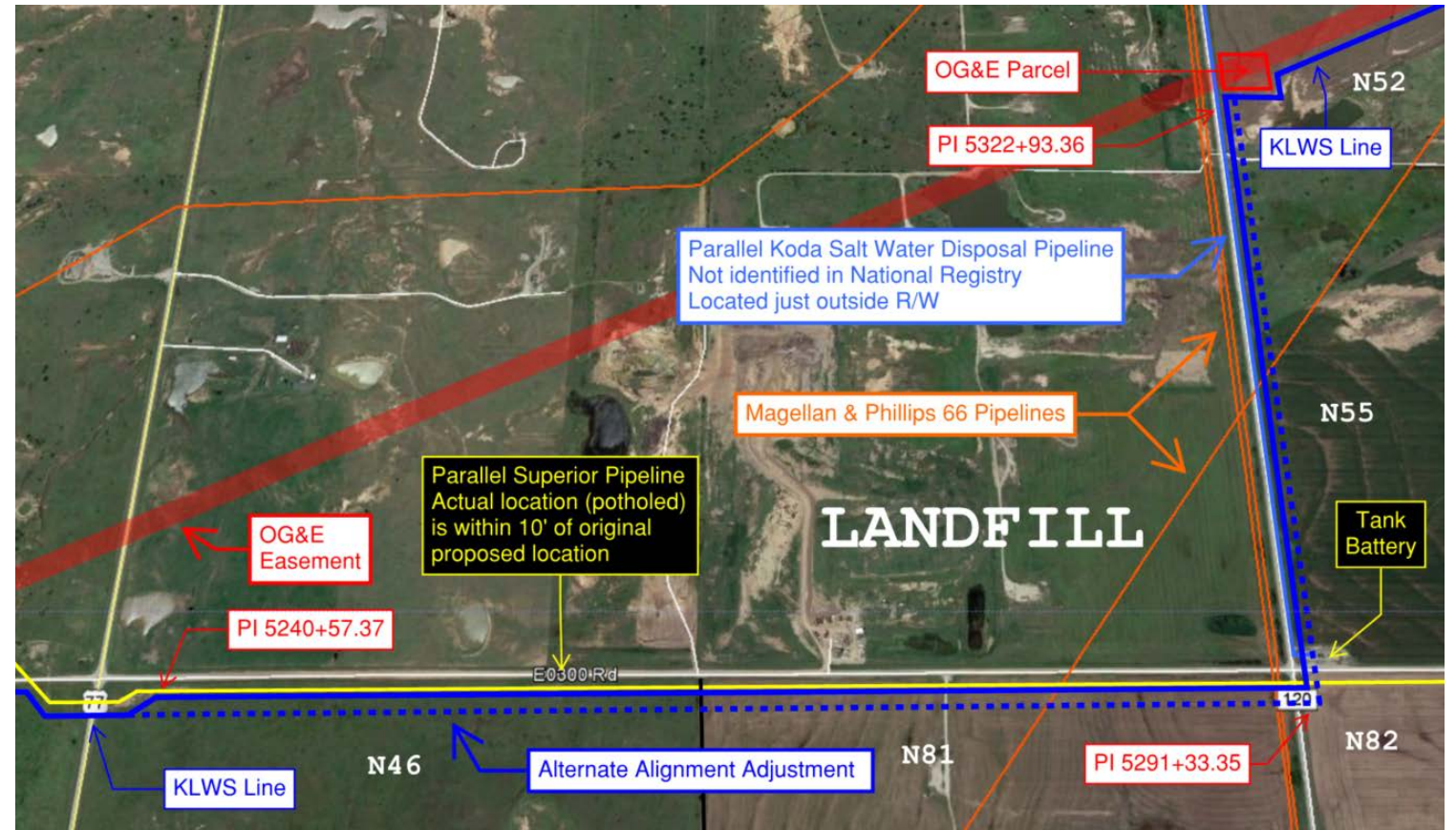
40% Easements Acquired  
As of Sept. 26, 2019



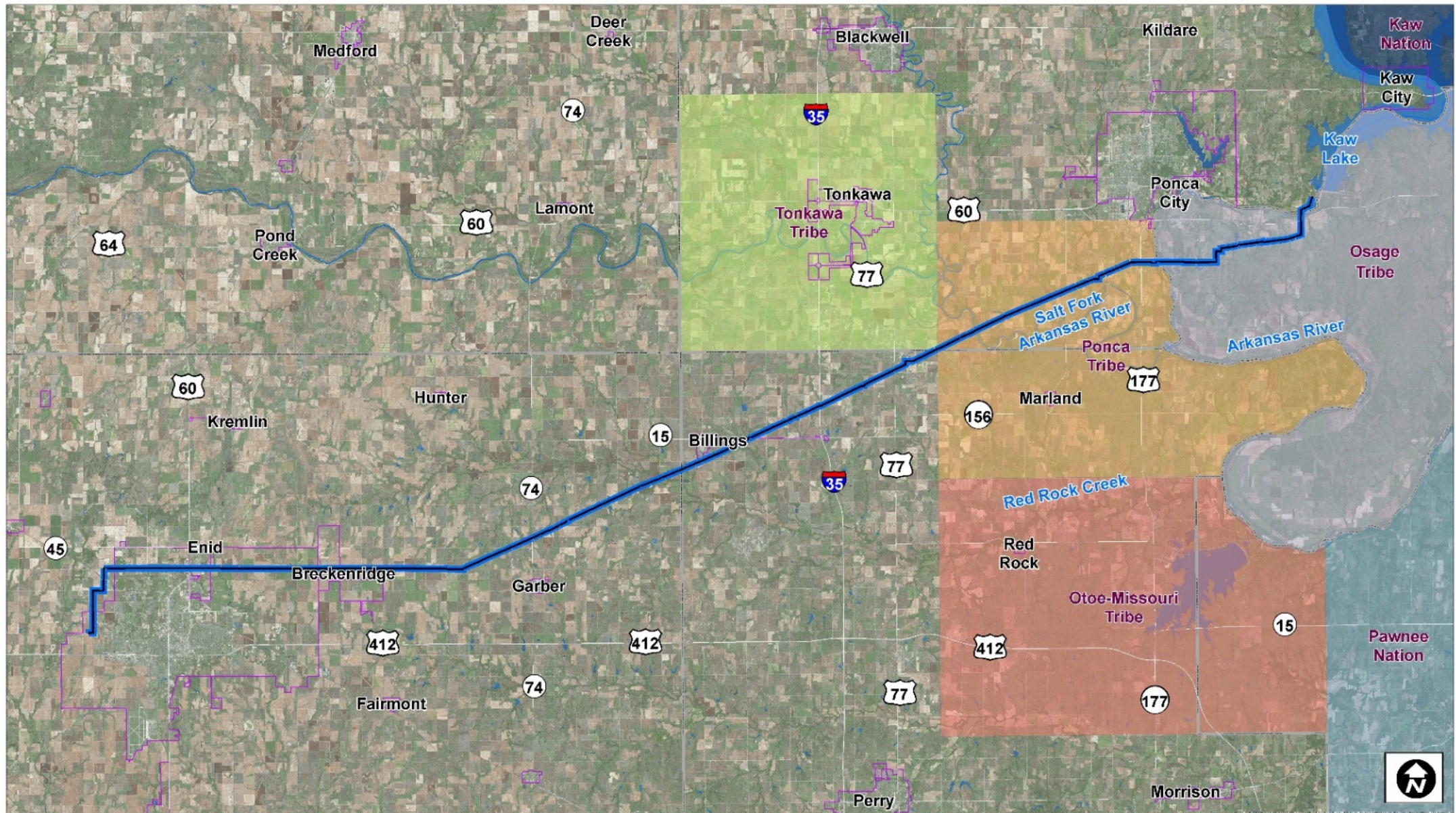


# PIPELINE CONFLICTS

- 240 Parcels
- Existing Oil and Gas Infrastructure
- Abandoned Oil and Gas Infrastructure
- New Oil and Gas Exploration
- Wind Energy
- Public Utilities



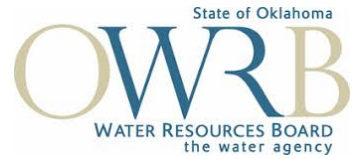








**US Army Corps  
of Engineers®**



# AGENCY PARTNERSHIPS

---



# ALL FIELD STUDY COMPLETE

## Cultural Resources

- Shovel tests on each parcel every 330 feet between the 200-foot-wide Area of Potential Effect (APE) – additional tests in high potential areas
- Deep Archaeological testing (trenching) at 12 high potential property sites

## Streams and Wetlands

- Approximately 51 Streams delineated and surveyed
- 27 Areas of potential wetlands, 11 ponds

## Threatened & Endangered Species

- *Habitat Identified:*
- Interior Least Tern (Endangered), Whooping Crane (Endangered), Piping Plover (Threatened), Bald Eagle (Protected)

## Hazardous Waste

88 Hazmat sites identified; 22 high risk (leaking or contaminated)

44 Oil and Gas wells

30 Water wells



# ACQISITION STRATEGY

CONSTRUCTION  
MANAGER AT RISK







**THANK YOU**

---